

Converting LUCY from VMware ESX to Hyper-V

A full guidance can be found on the [Microsoft website here](#). The tool is provided by Microsoft and available by the

link

The Hyper-V version should be 5.2.0 or later.

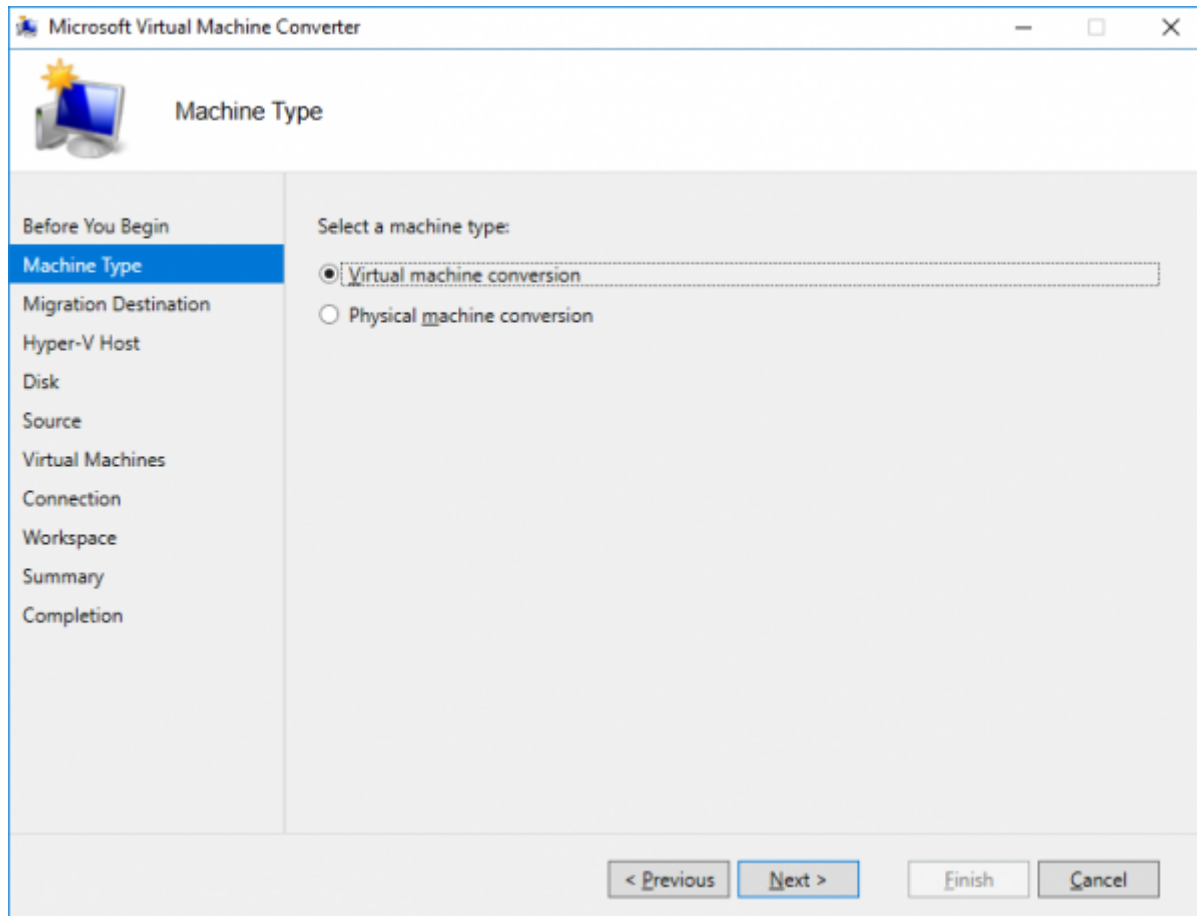


Before running the tool, do not forget to power off the Lucy's VM.

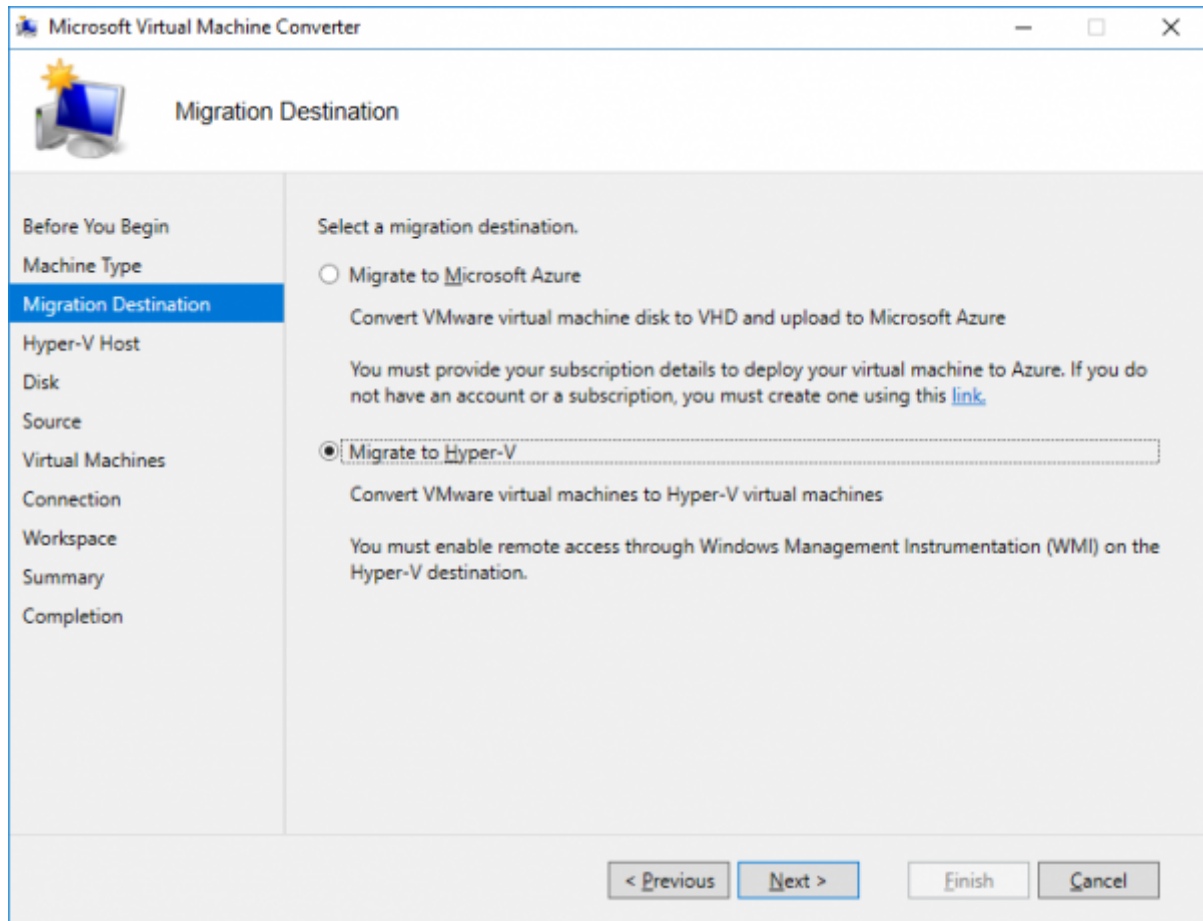
It's also to be noted that there must be enough disk space on your Hyper-V server (at least larger than the size of the initial VMware virtual drive).

Conversion steps

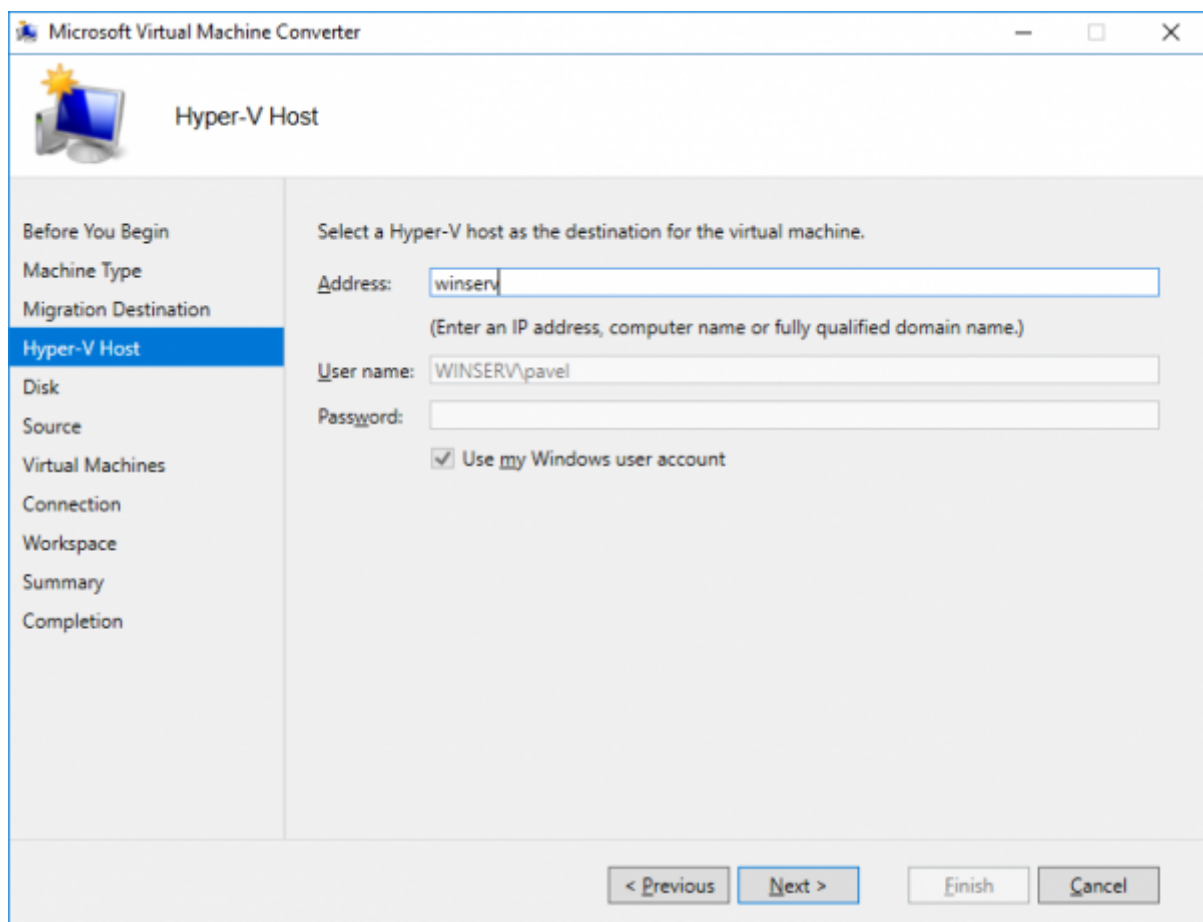
1. Run the application Microsoft Virtual Machine Converter and select a machine type: "**Virtual machine conversion**"



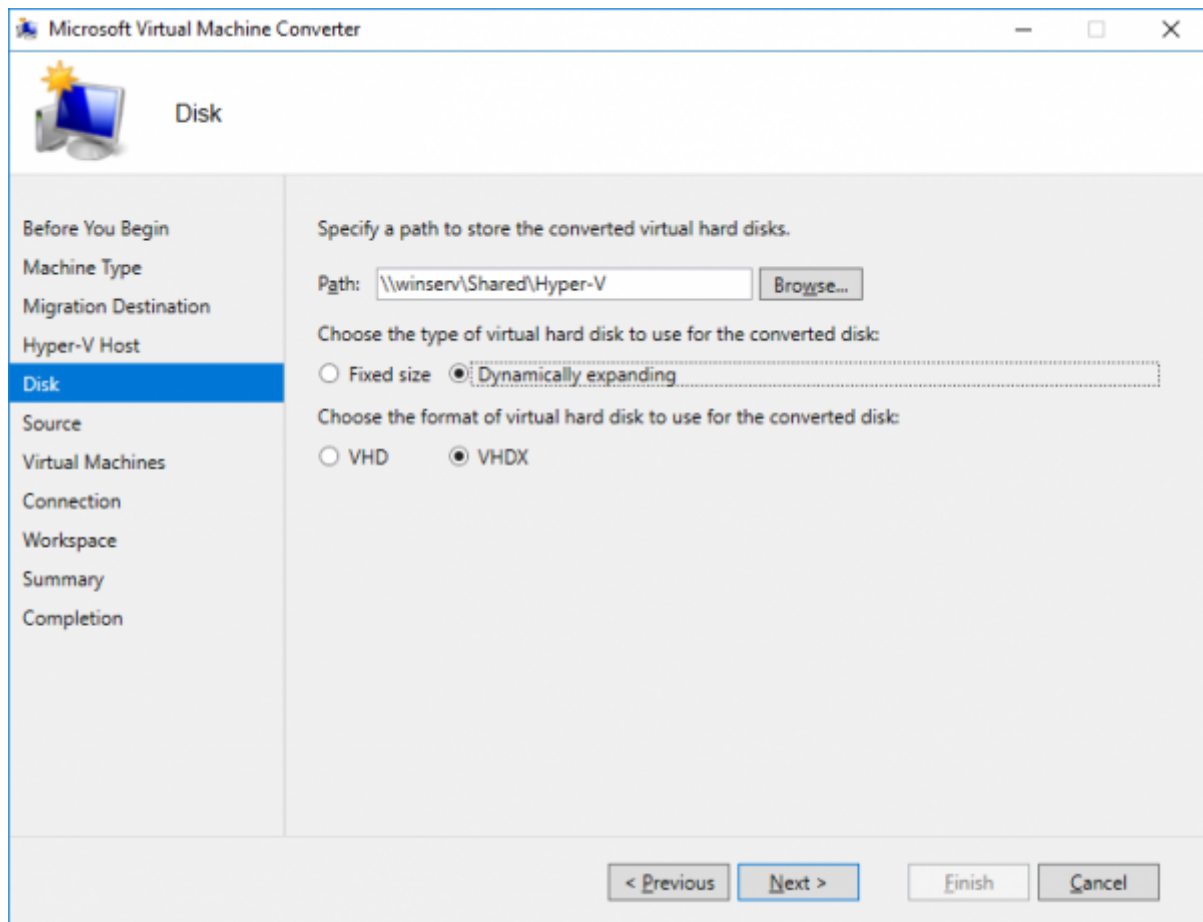
2. Select a migration destination: "**Migrate to Hyper-V**"



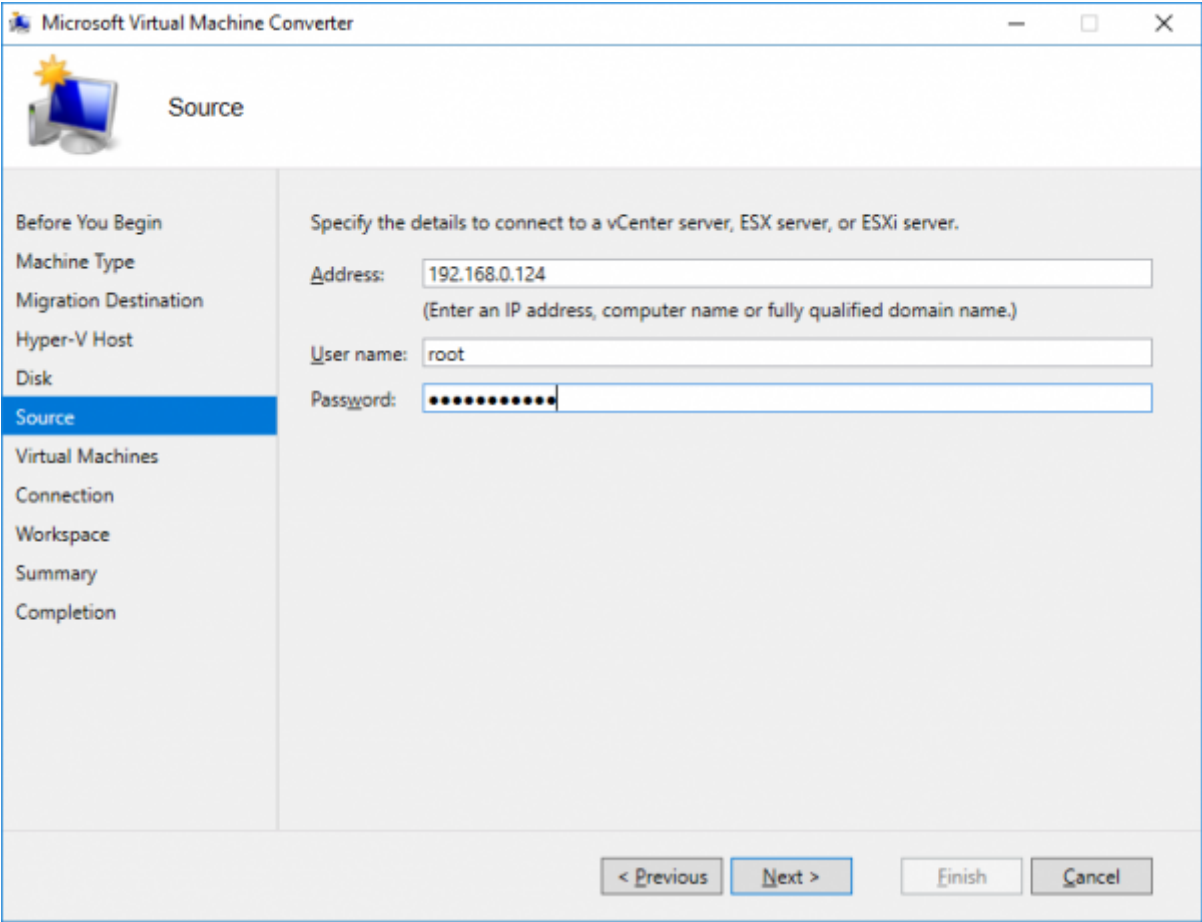
3. Select a Hyper-V host as the destination for the virtual machine:



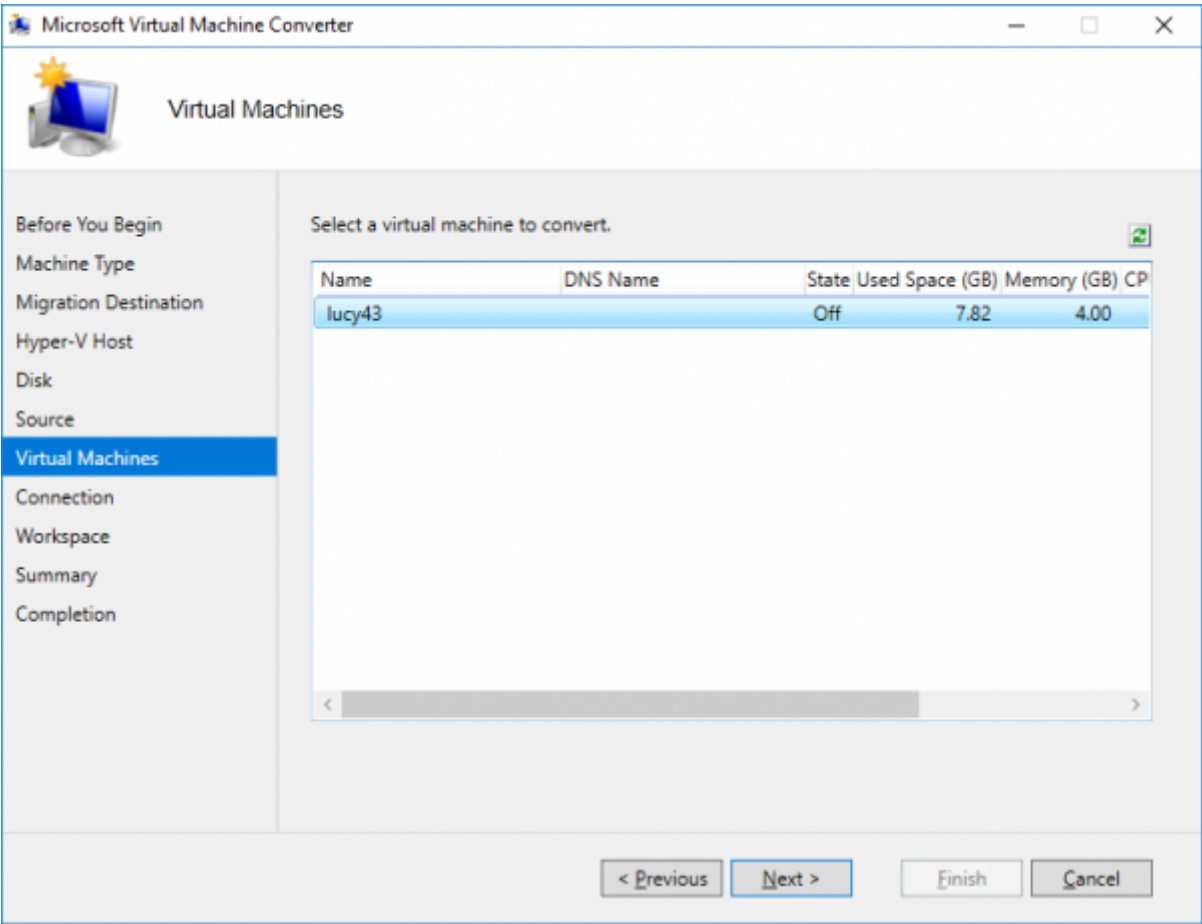
4. Specify a path to store the converted virtual hard disks:



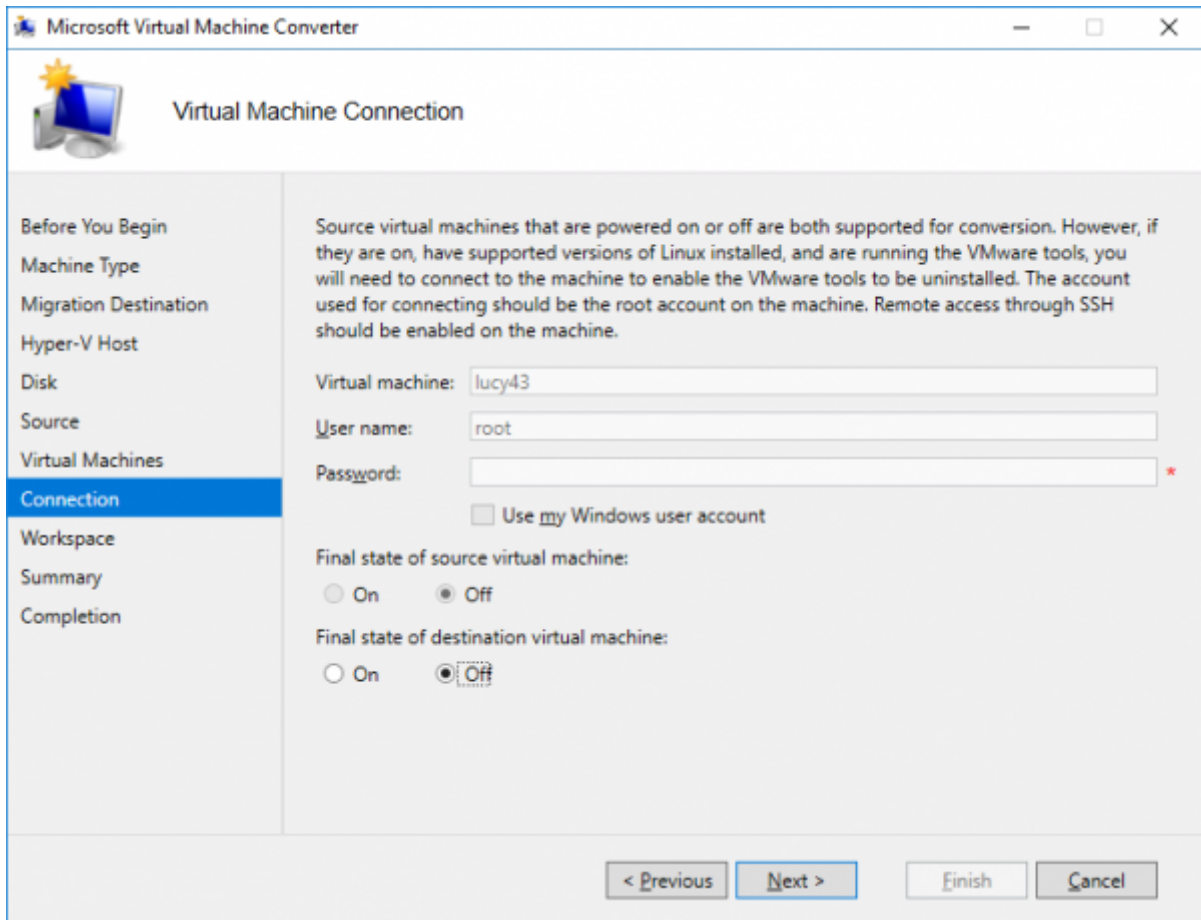
5. Specify the details to connect to an ESX\ESXi server:



6. Select a virtual machine to convert:

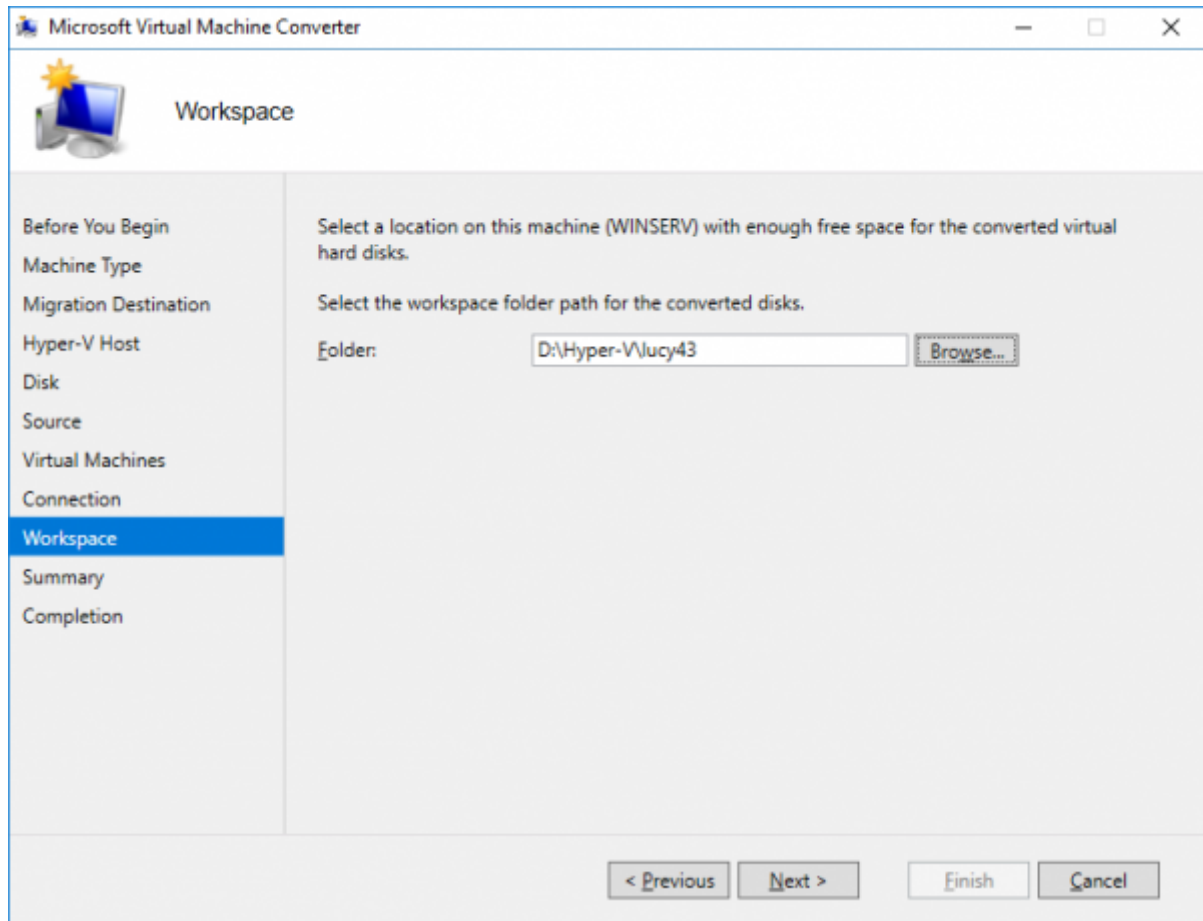


7. Leave the options unchanged and click "Next":

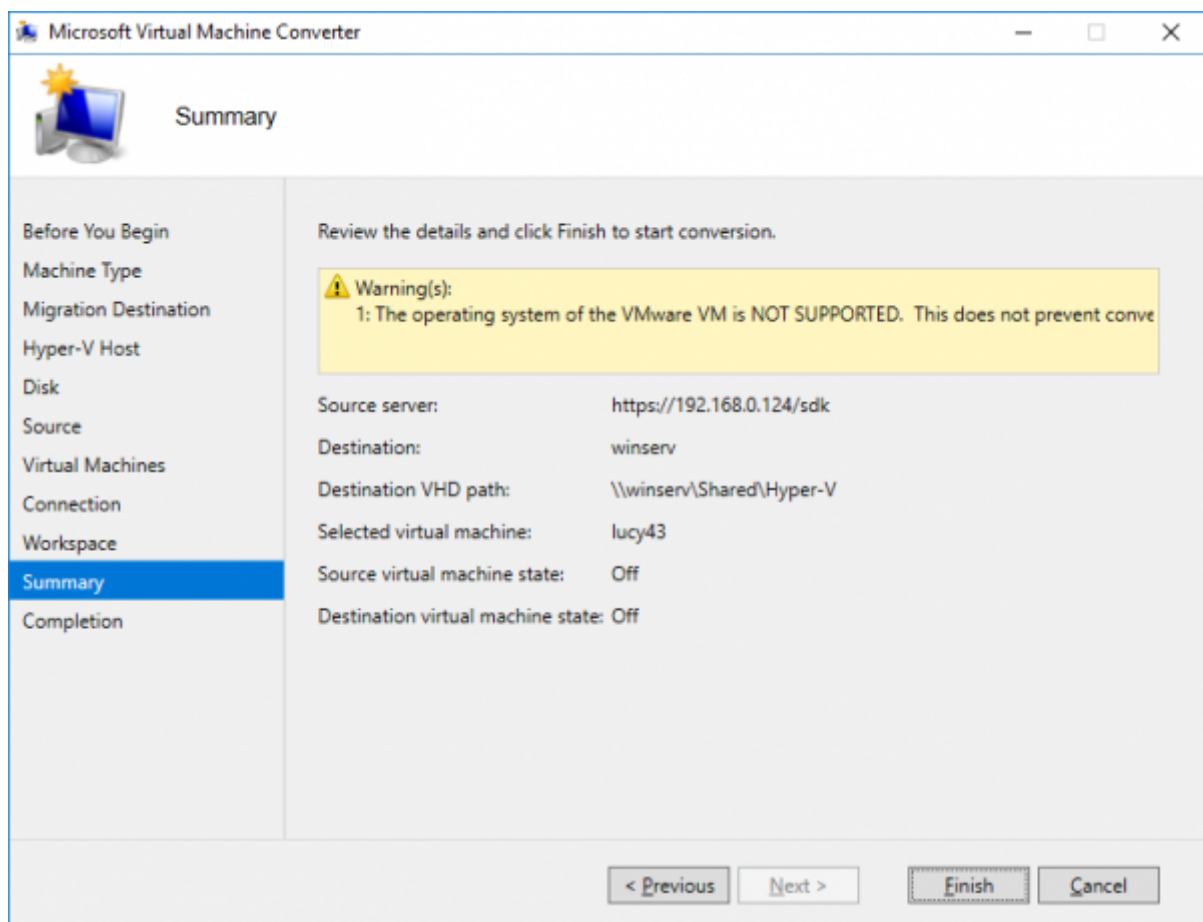


The screenshot shows the 'Virtual Machine Connection' window in the Microsoft Virtual Machine Converter. The window has a sidebar on the left with the following options: 'Before You Begin', 'Machine Type', 'Migration Destination', 'Hyper-V Host', 'Disk', 'Source', 'Virtual Machines', 'Connection' (which is highlighted in blue), 'Workspace', 'Summary', and 'Completion'. The main area contains the following text: 'Source virtual machines that are powered on or off are both supported for conversion. However, if they are on, have supported versions of Linux installed, and are running the VMware tools, you will need to connect to the machine to enable the VMware tools to be uninstalled. The account used for connecting should be the root account on the machine. Remote access through SSH should be enabled on the machine.' Below this text are three input fields: 'Virtual machine:' with the value 'lucy43', 'User name:' with the value 'root', and 'Password:' which is empty. There is a red asterisk to the right of the password field. Below the password field is a checkbox labeled 'Use my Windows user account' which is unchecked. At the bottom of the main area are two sections: 'Final state of source virtual machine:' with radio buttons for 'On' and 'Off' (where 'Off' is selected), and 'Final state of destination virtual machine:' with radio buttons for 'On' and 'Off' (where 'Off' is selected). At the bottom of the window are four buttons: '< Previous', 'Next >', 'Finish', and 'Cancel'.

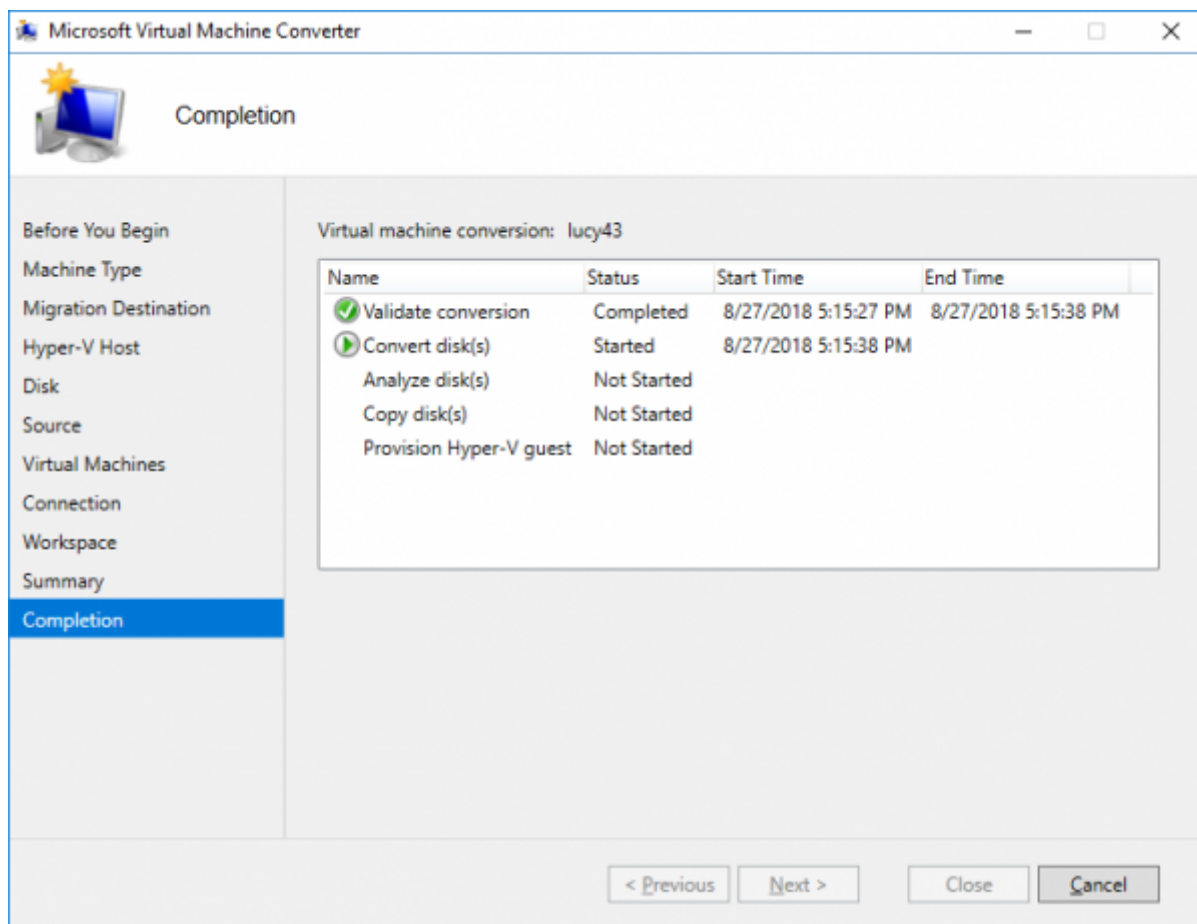
8. Select a location for the converted virtual disks:



9. Review the details and click "Finish" to start conversion:

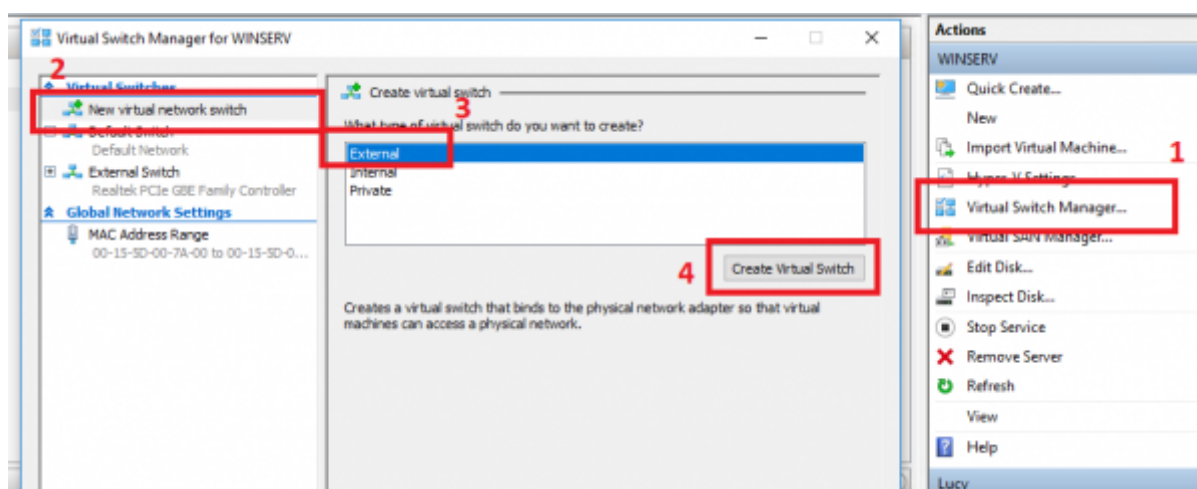


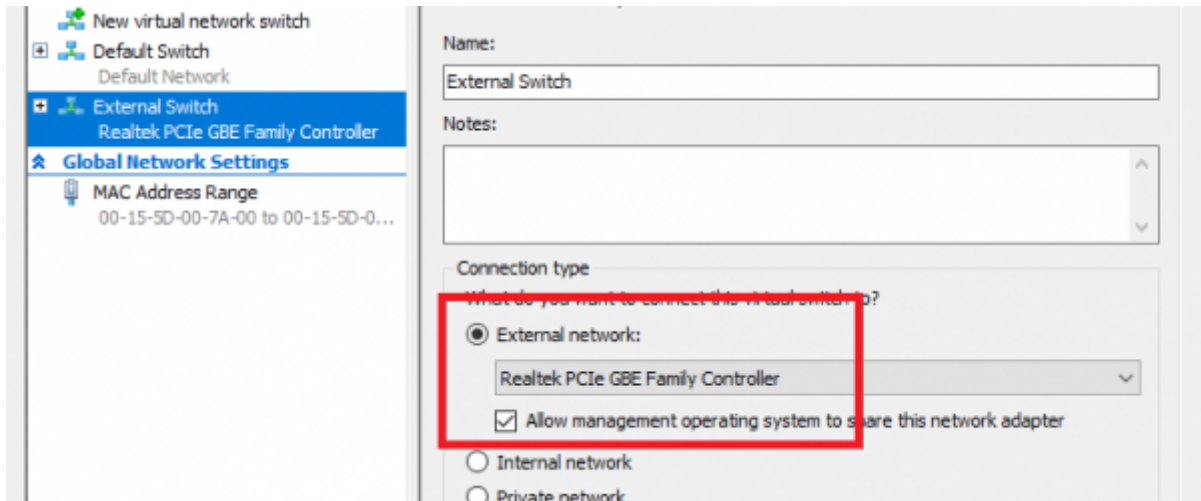
10. Wait until the conversion process is complete.



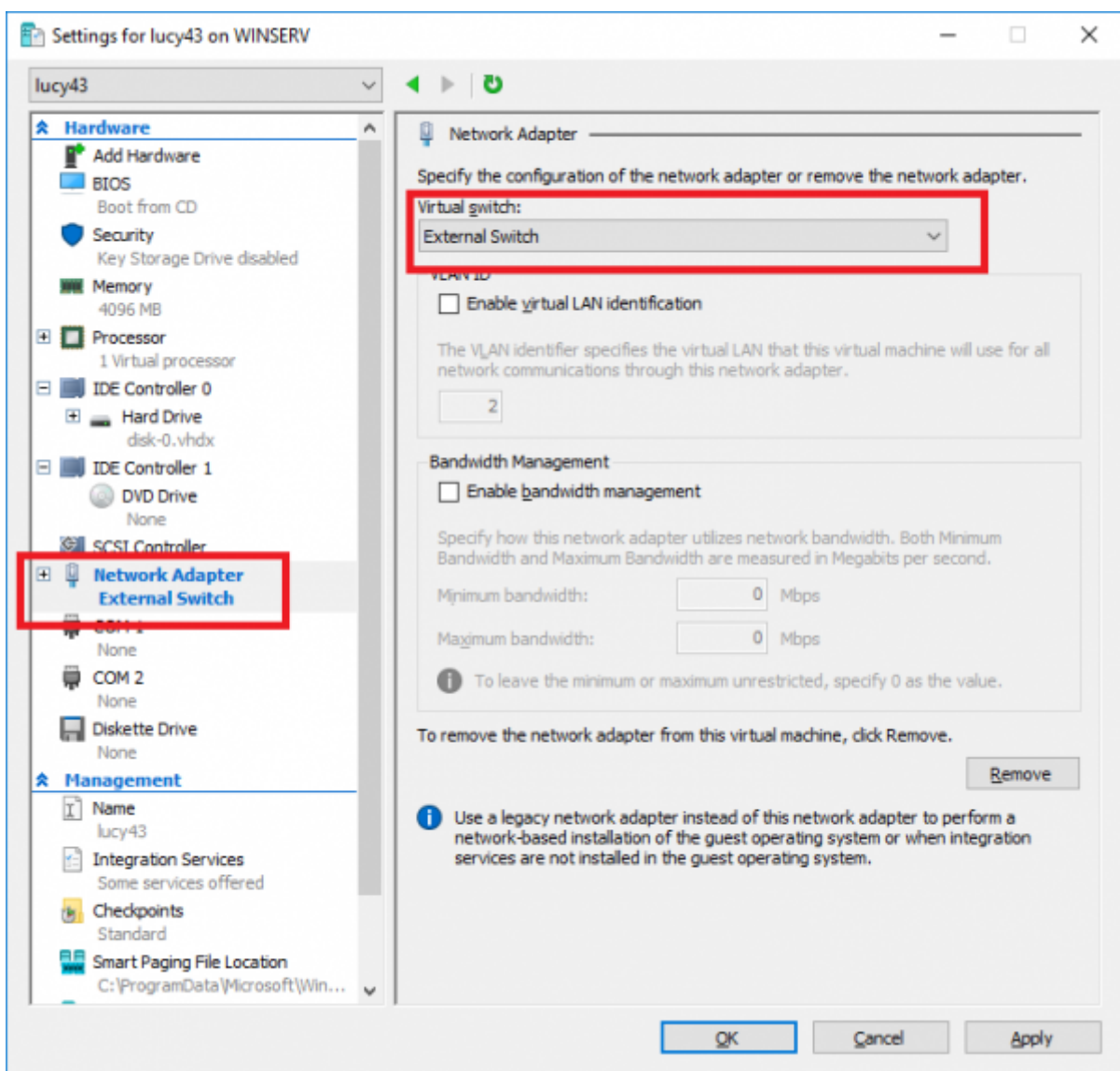
Finishing

After a successful conversion, do not rush to run the newly created virtual machine. You need first create (if not exist) a new External Virtual Switch and assign it to the virtual machine (within Network Adapter settings). See the screenshots below.





Connect the external switch to the converted virtual machine:



Power on the virtual machine and reconfigure the network:


```
Please choose one of the following options:

  1. Current Configuration
  2. Automatic Configuration
  3. Network Configuration
  4. PostgreSQL Configuration
  5. Domain Configuration
  6. Users
  7. Generate root and user password
  8. System Login (Logout Setup Menu)
  9. System Reboot

Your choice (1..9): 3

Network Configuration
-----
System network configuration: IP address, network mask and gateway.
!!! Lucy can not connect to central server.
!!! This is not a fatal error, you can configure network connection
!!! and specify proxy server later, after installation.
!!! Connection to the central server is necessary for updating Lucy in future.

Please choose one of the following options (or enter 'q' to quit this menu and enter o

  1. Manual Configuration
  2. DHCP <-- use this if you don't know what to choose
  3. Network Tools

Your choice (1..3, q - quit this menu and enter other configuration settings): 2_
```

From:

<https://wiki.lucysecurity.com/> - LUCY

Permanent link:

https://wiki.lucysecurity.com/doku.php?id=converting_vmware_to_hyperv

Last update: 2019/09/10 15:40

