

Converting LUCY from VMware ESX to Hyper-V

A full guidance can be found on the [Microsoft website here](#). The tool is provided by Microsoft and available by the

link

The Hyper-V version should be 5.2.0 or later

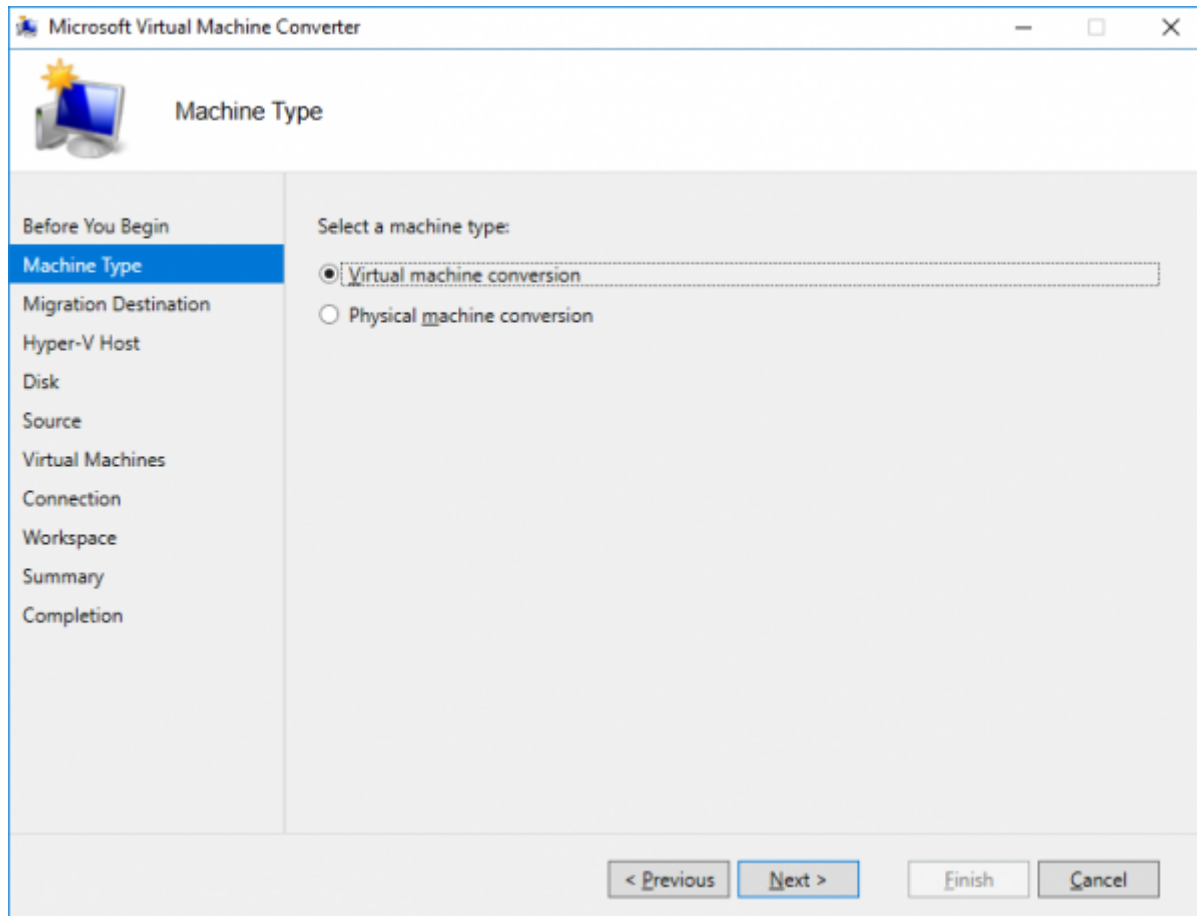


Before running the tool, do not forget to power off the Lucy's VM.

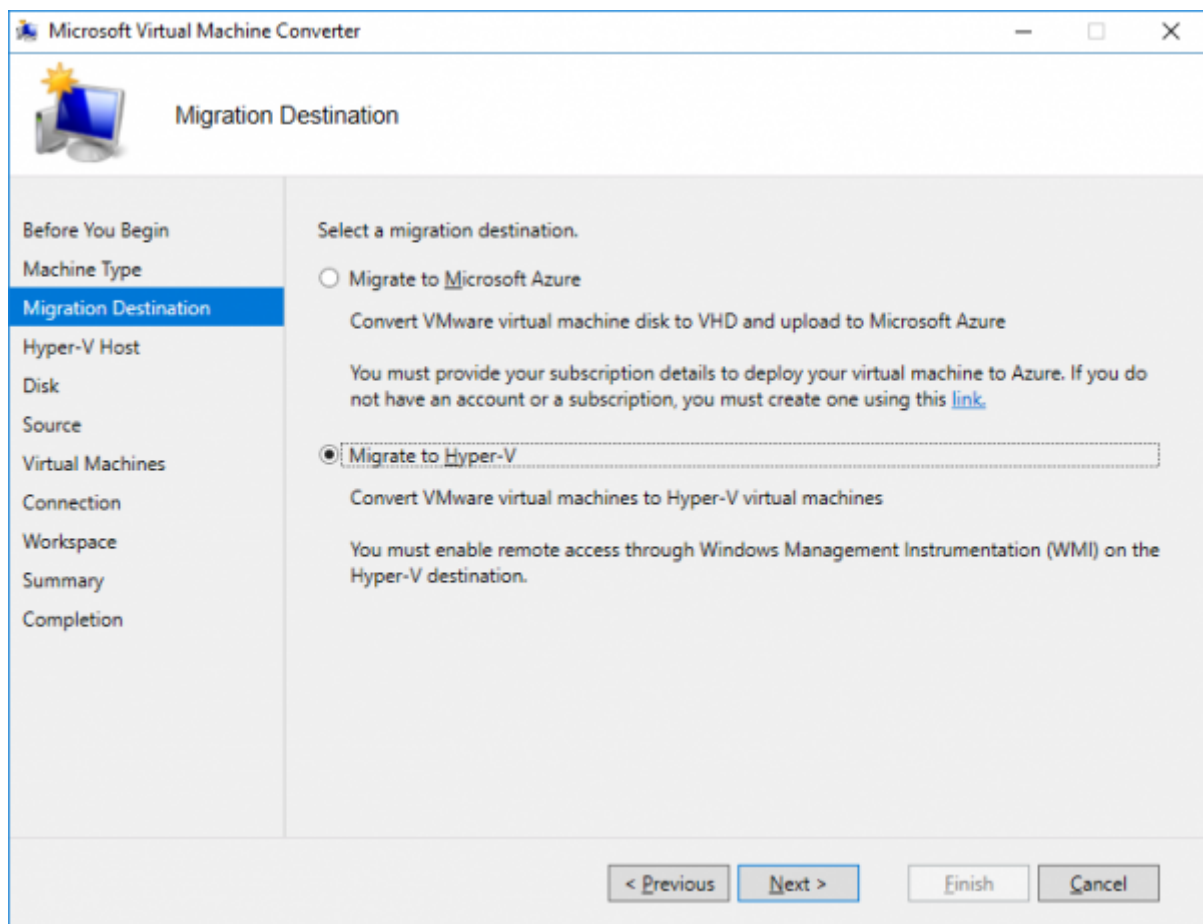
It's also to be noted that there must be enough disk space on your Hyper-V server (at least larger than the size of the initial VMware virtual drive).

Conversion steps

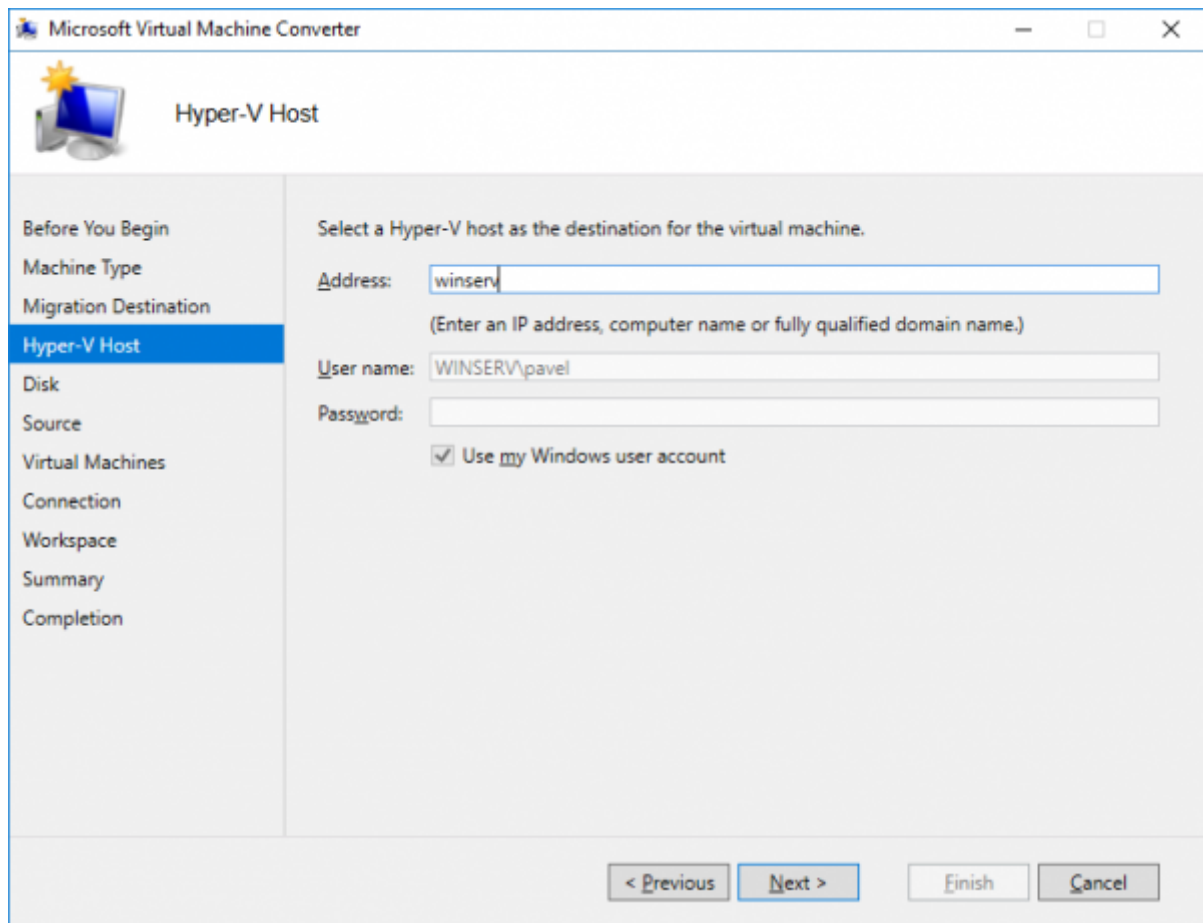
1. Run the application Microsoft Virtual Machine Converter and select a machine type: "**Virtual machine conversion**"



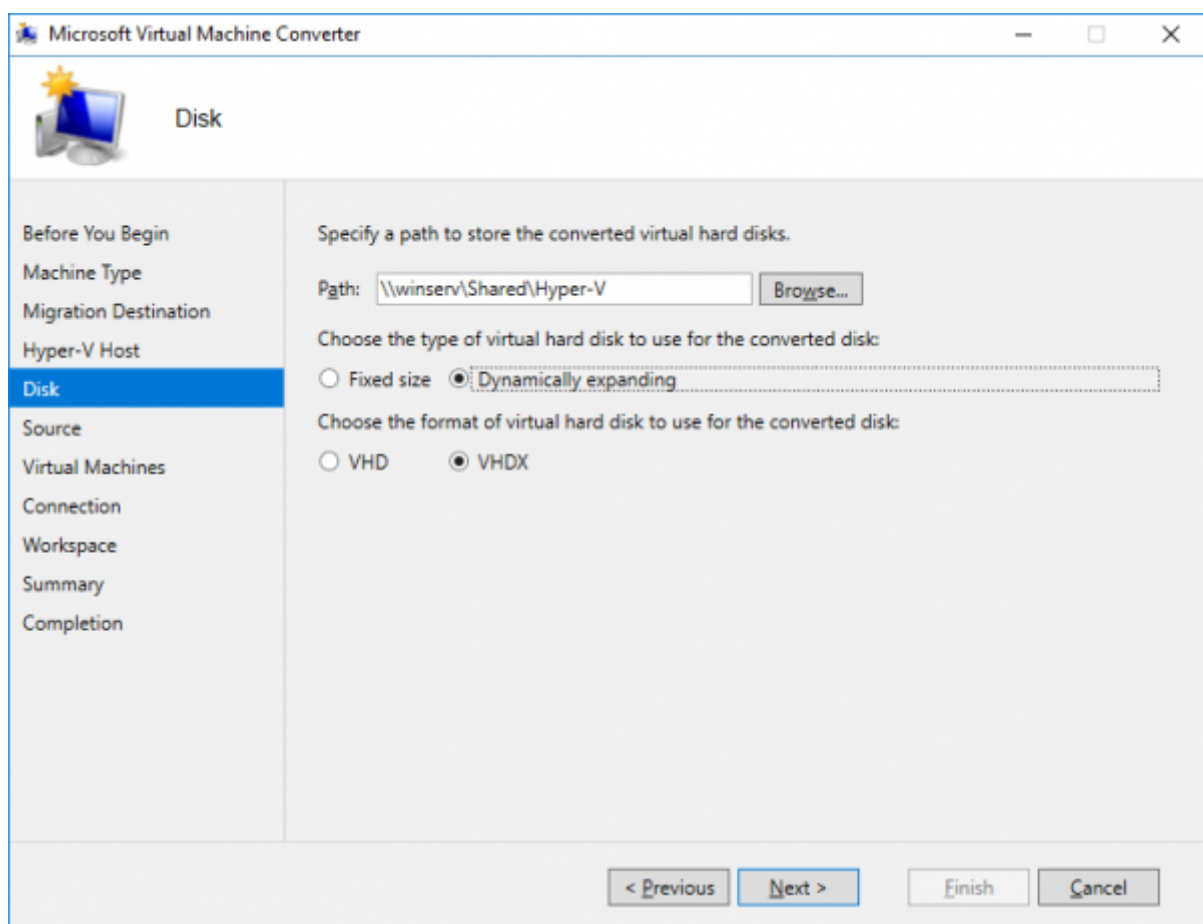
2. Select a migration destination: "**Migrate to Hyper-V**"



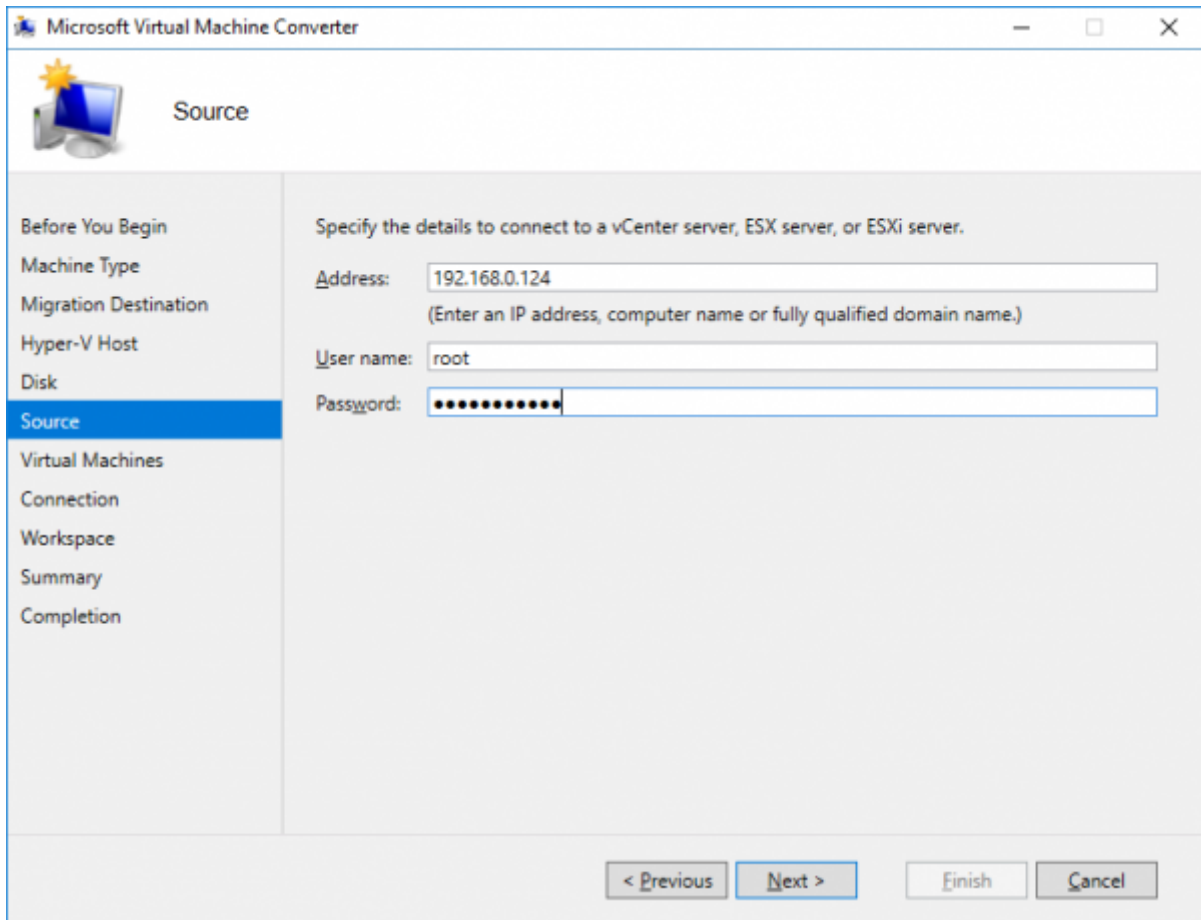
3. Select a Hyper-V host as the destination for the virtual machine:



4. Specify a path to store the converted virtual hard disks:

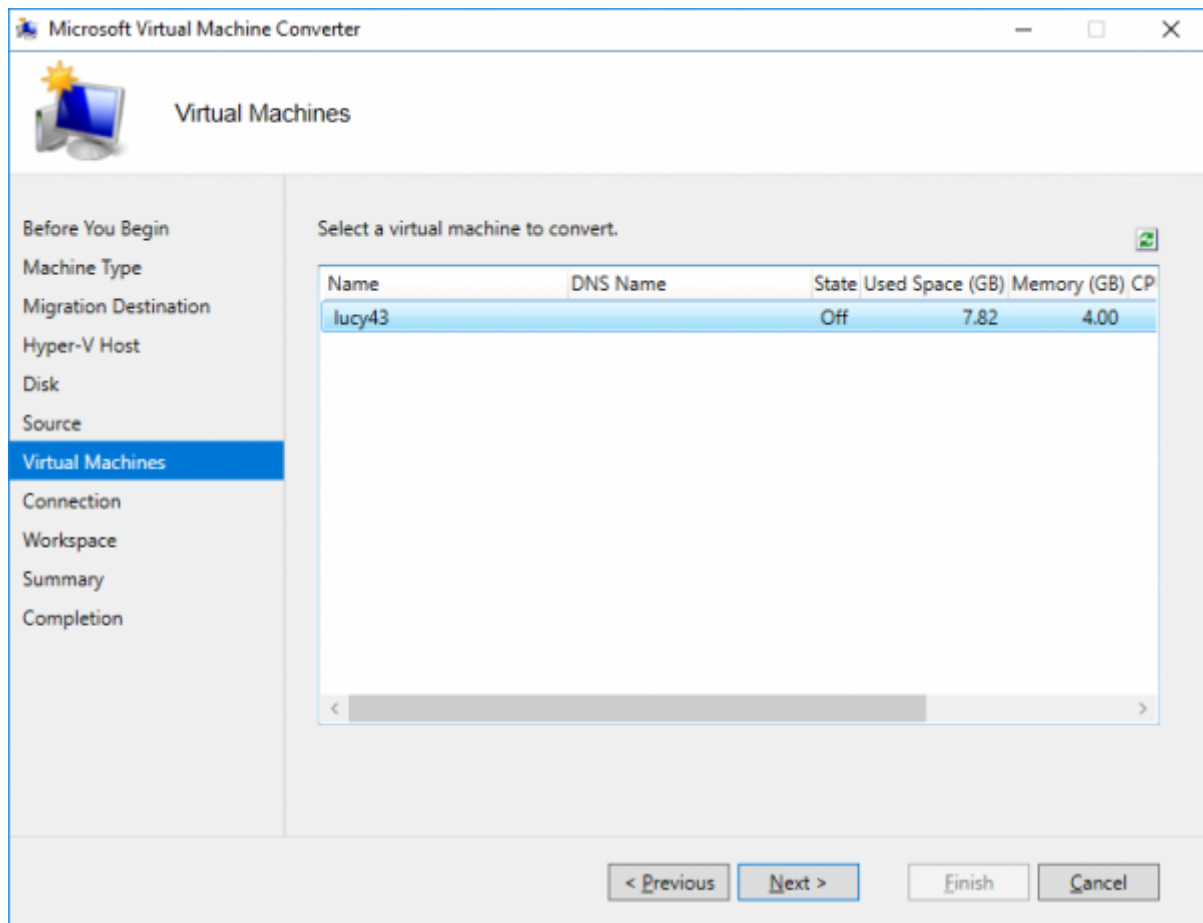


5. Specify the details to connect to an ESX\ESXi server:

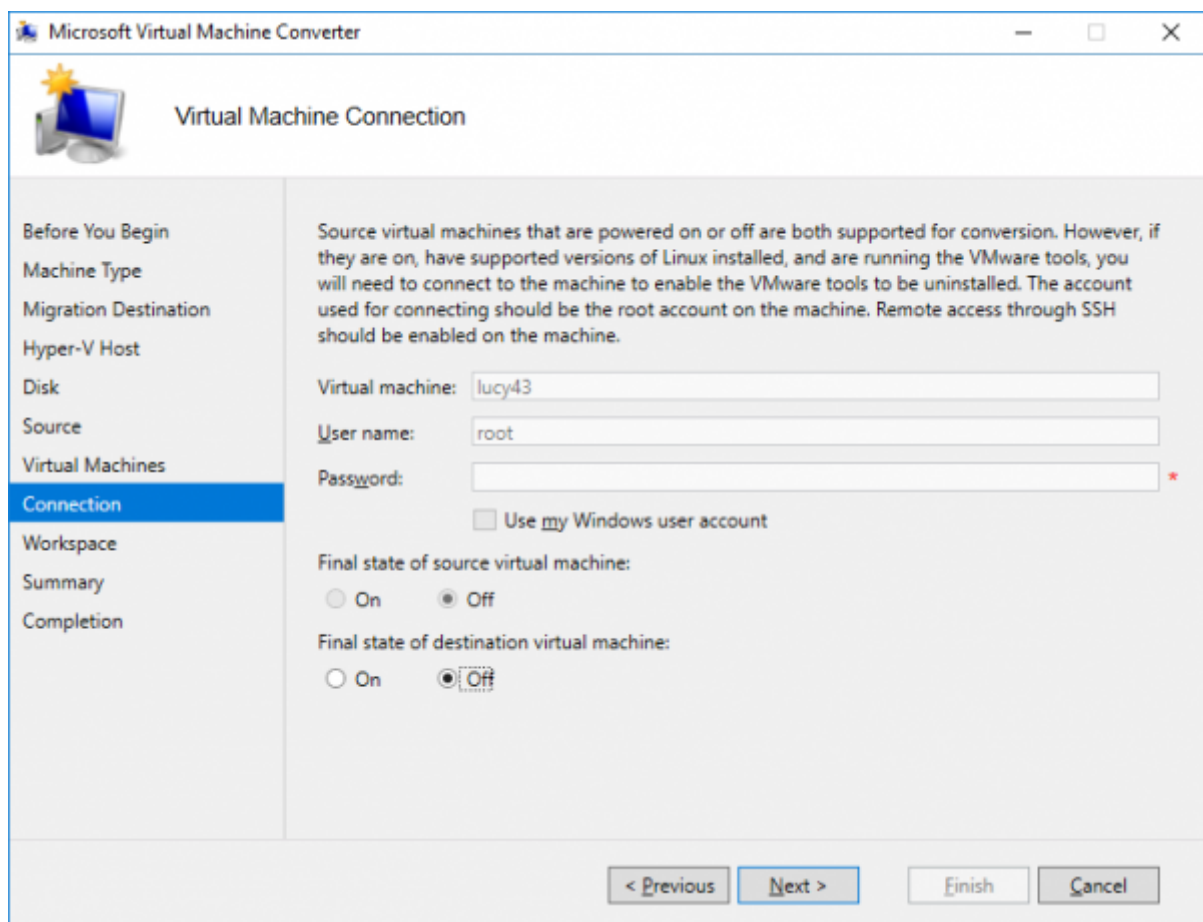


The screenshot shows the 'Source' step of the Microsoft Virtual Machine Converter wizard. The window title is 'Microsoft Virtual Machine Converter'. On the left is a navigation pane with the following items: 'Before You Begin', 'Machine Type', 'Migration Destination', 'Hyper-V Host', 'Disk', 'Source' (highlighted in blue), 'Virtual Machines', 'Connection', 'Workspace', 'Summary', and 'Completion'. The main area is titled 'Source' and contains the instruction: 'Specify the details to connect to a vCenter server, ESX server, or ESXi server.' Below this are three input fields: 'Address:' with the value '192.168.0.124' and a hint '(Enter an IP address, computer name or fully qualified domain name.)', 'User name:' with the value 'root', and 'Password:' with masked characters '.....'. At the bottom right are four buttons: '< Previous', 'Next >', 'Finish', and 'Cancel'.

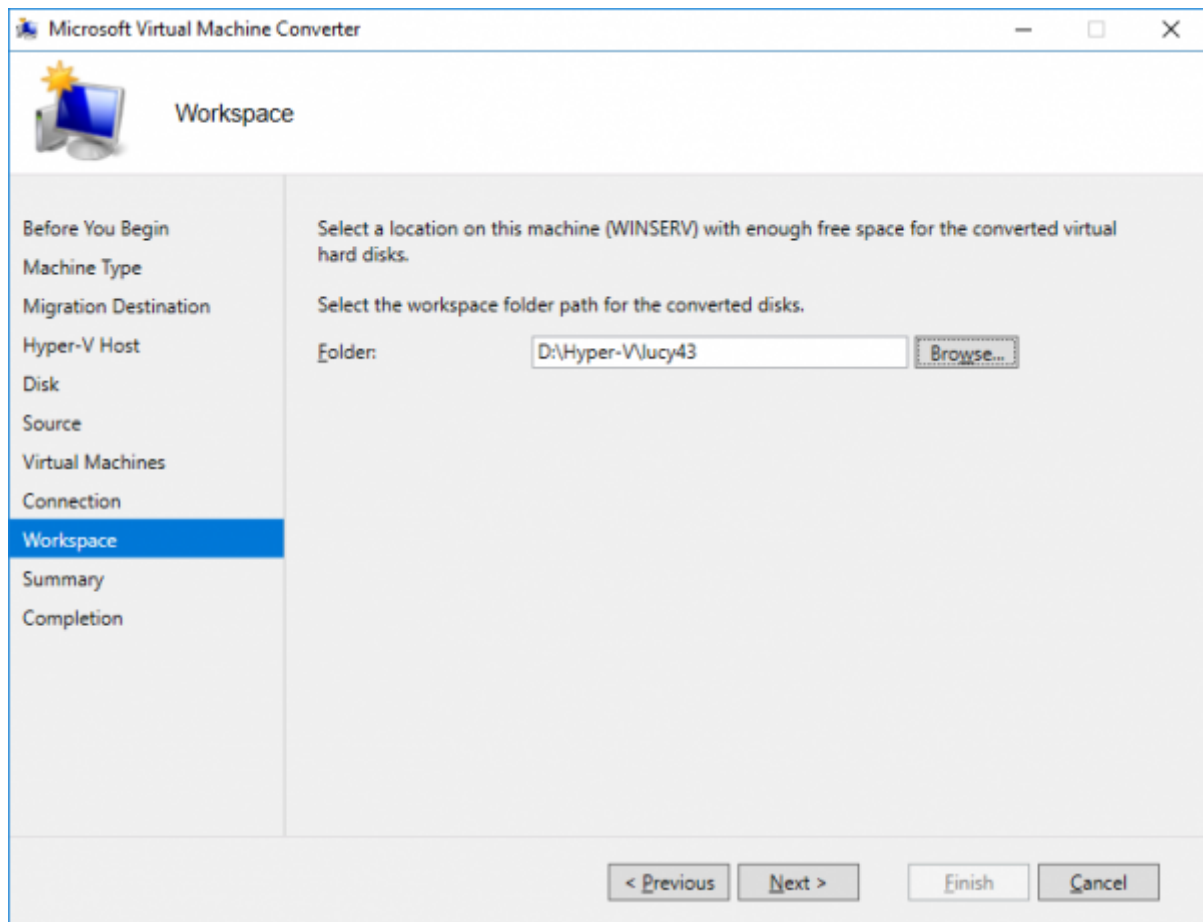
6. Select a virtual machine to convert:



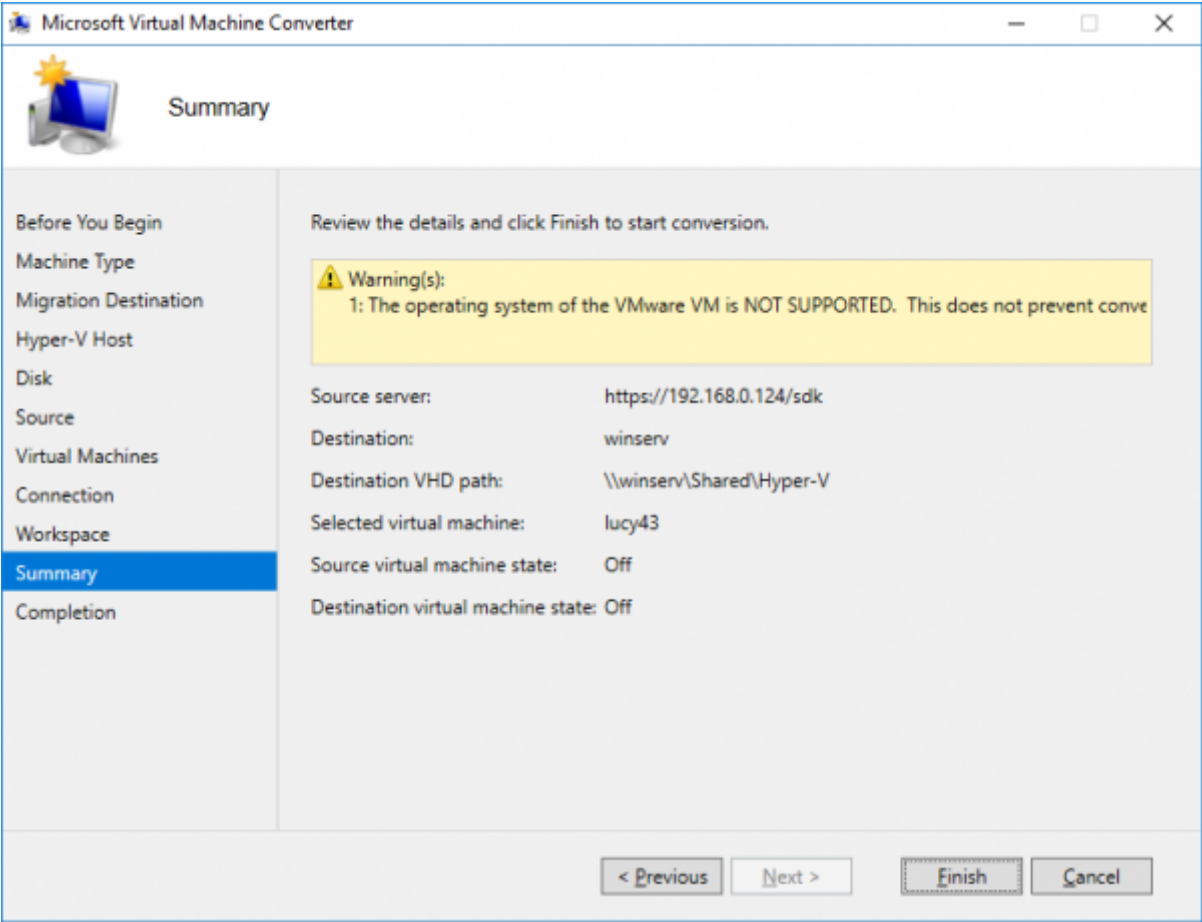
7. Leave the options unchanged and click "Next":



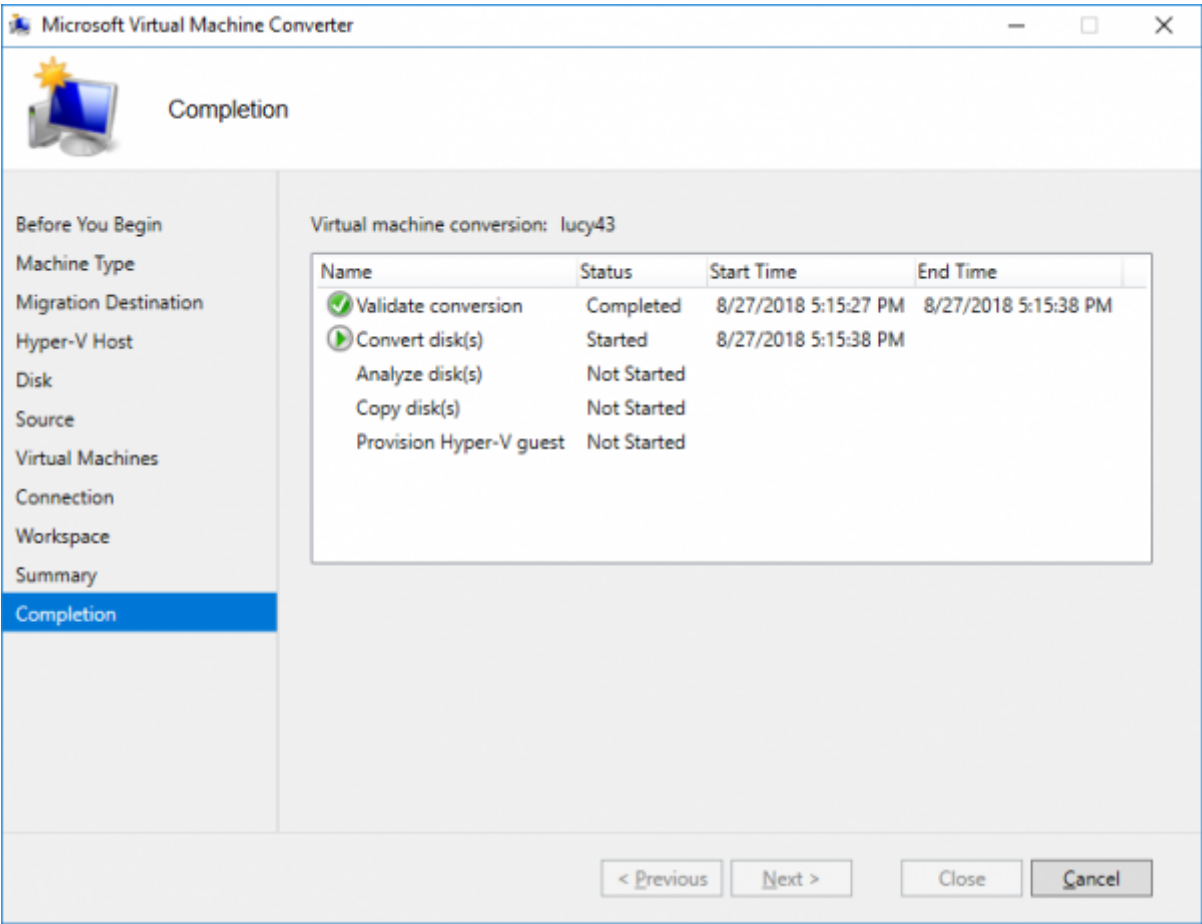
8. Select a location for the converted virtual disks:



9. Review the details and click "Finish" to start conversion:

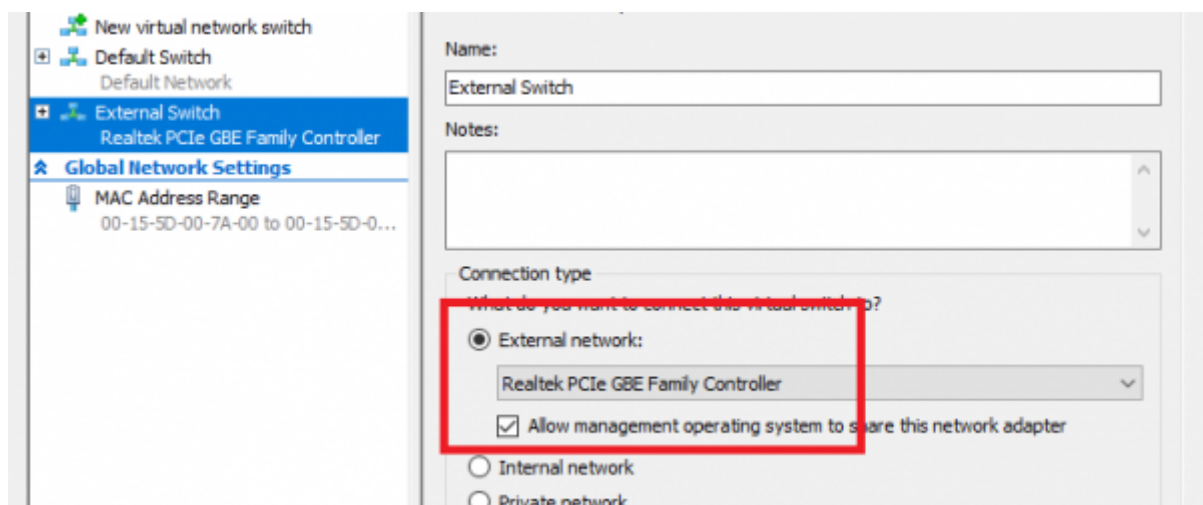
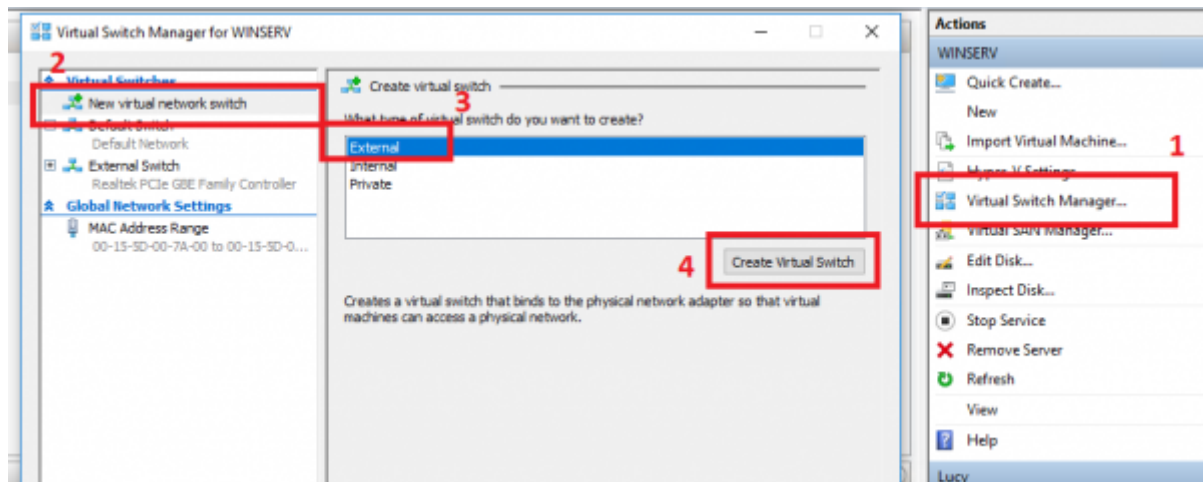


10. Wait until the conversion process is complete.

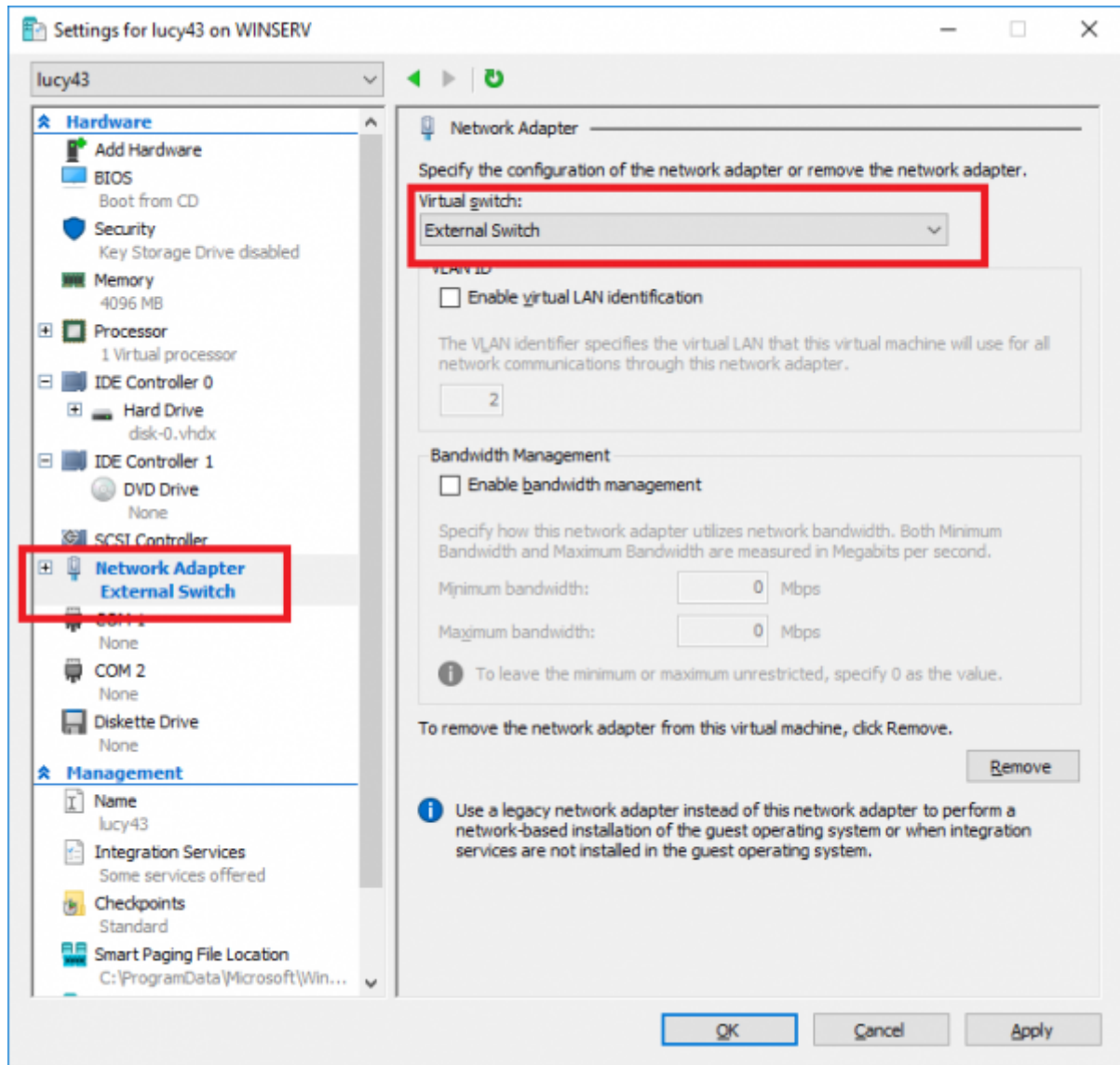


Finishing

After a successful conversion, do not rush to run the newly created virtual machine. You need first create (if not exist) a new External Virtual Switch and assign it to the virtual machine (within Network Adapter settings). See the screenshots below.



Connect the external switch to the converted virtual machine:



Power on the virtual machine and reconfigure the network:

```
Please choose one of the following options:

  1. Current Configuration
  2. Automatic Configuration
  3. Network Configuration
  4. PostgreSQL Configuration
  5. Domain Configuration
  6. Users
  7. Generate root and user password
  8. System Login (Logout Setup Menu)
  9. System Reboot

Your choice (1..9): 3

Network Configuration
-----
System network configuration: IP address, network mask and gateway.
!!! Lucy can not connect to central server.
!!! This is not a fatal error, you can configure network connection
!!! and specify proxy server later, after installation.
!!! Connection to the central server is necessary for updating Lucy in future.

Please choose one of the following options (or enter 'q' to quit this menu and enter o

  1. Manual Configuration
  2. DHCP <-- use this if you don't know what to choose
  3. Network Tools

Your choice (1..3, q - quit this menu and enter other configuration settings): 2_
```

From:
<https://wiki.lucysecurity.com/> - LUCY

Permanent link:
https://wiki.lucysecurity.com/doku.php?id=converting_vmware_to_hyperv&rev=1568122825

Last update: **2019/09/10 15:40**

