

# Setup tutorial for virtual box

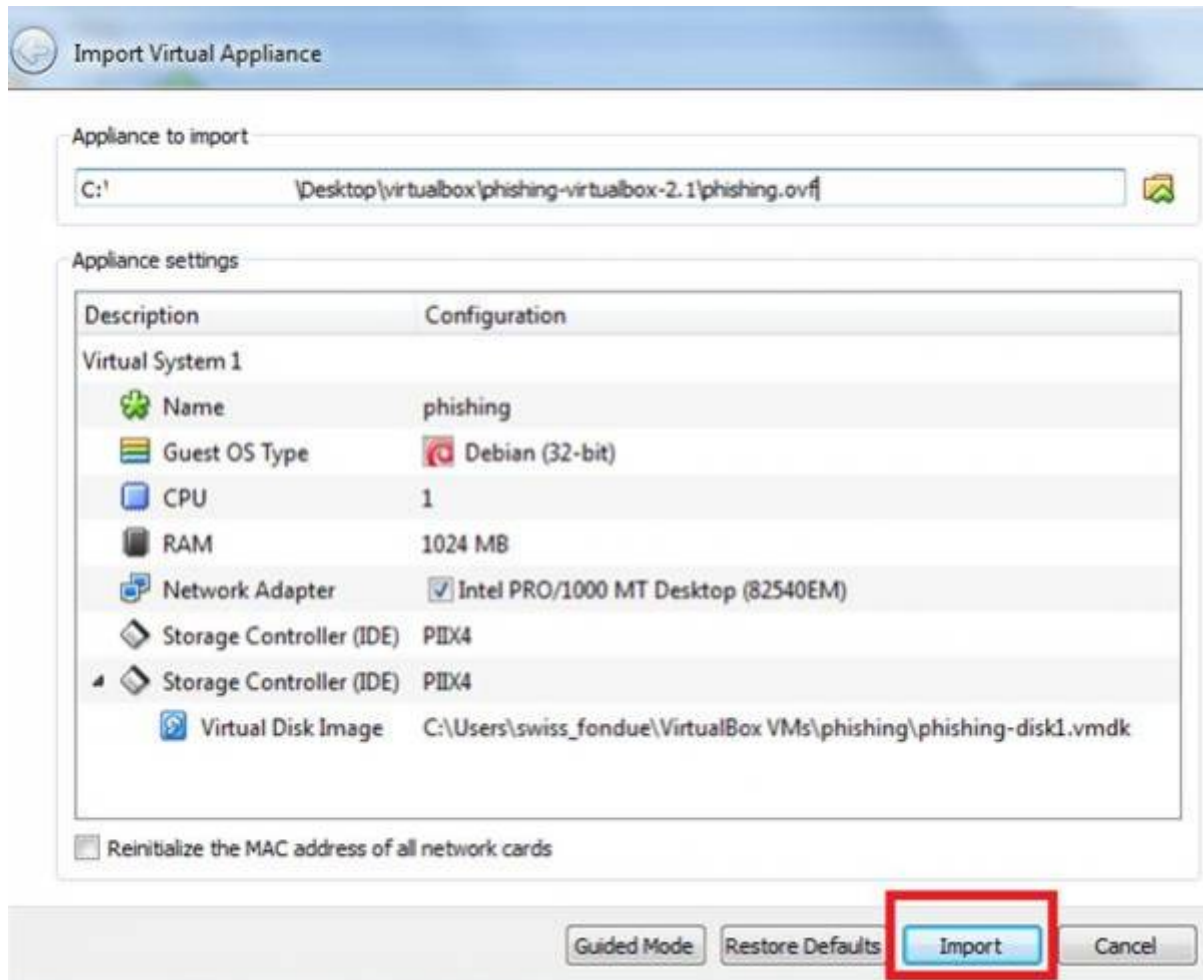
1) Download the latest free version of Virtual box here: <https://www.virtualbox.org/>.

2) Extract the contents of the ZIP file you downloaded from our page (e.g. <http://download.phishing-server.com/dl/lucy-latest/virtualbox.zip>).

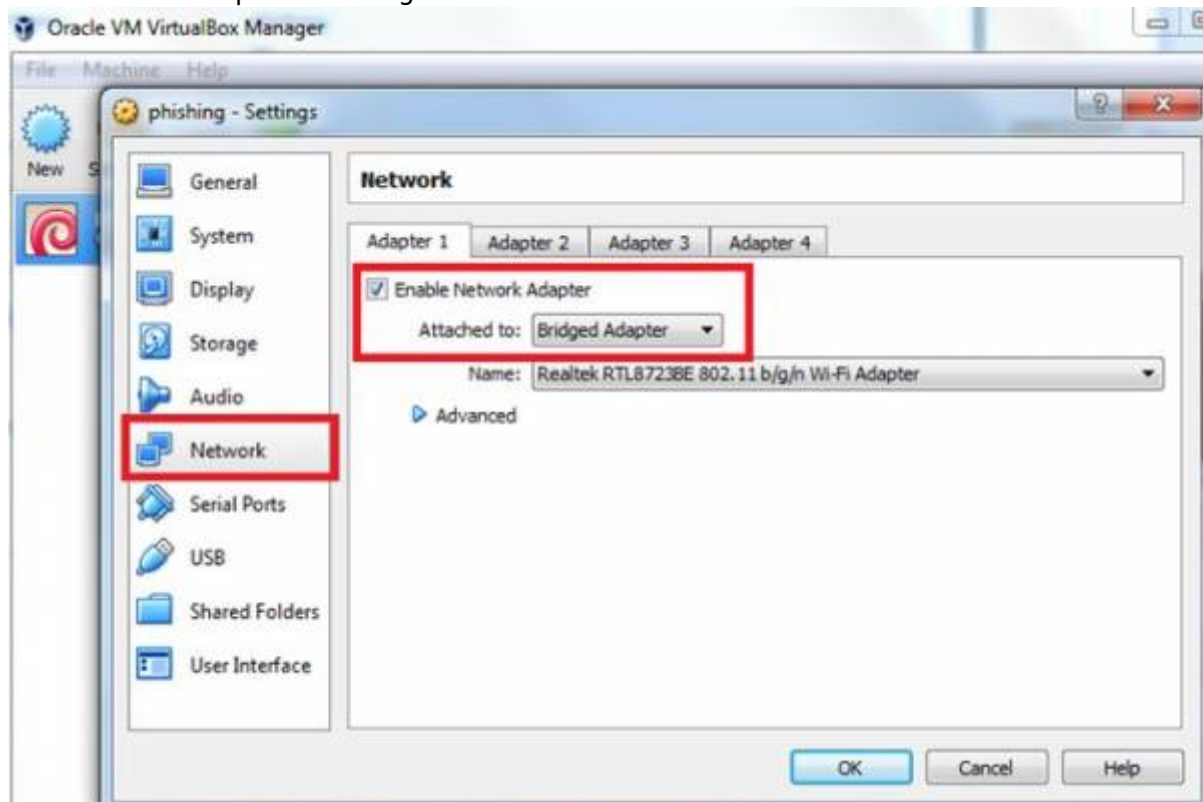
3) Open the ovf file by clicking “Import appliance”. Make sure your virtual server has at least 2 GB RAM and 30 GB HD available.



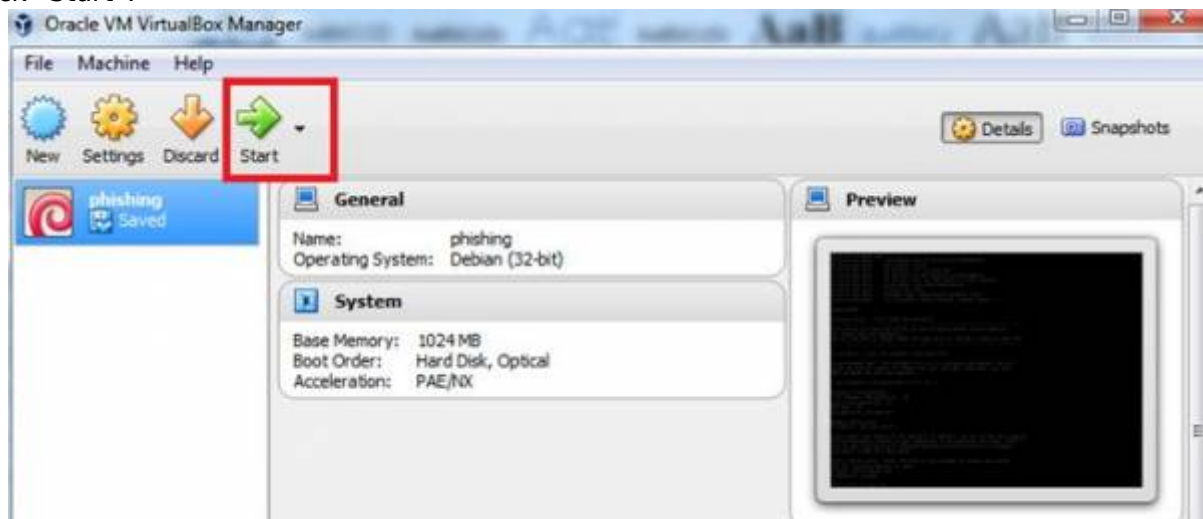
4) Click “Import”.



5) Set the Network adapter to "bridged".



6) Click "Start".



7) Start the Virtual Box image and initiate the [installation script](#). If you already have a domain name for LUCY, please make sure that you specify it within the setup script as the certificate for the administration will be based on that domain name.

8) [Login](#) to LUCY with a Webbrowser. Continue the setup in the browser using the credentials provided in the setup script. If you want to install a commercial version, please provide us with the [workstation ID](#).

9) Define your [default mail delivery method](#) in LUCY. In case you use the build in mail server: set the [hostname](#) for the mail server.

10) Setup a [domain](#) in LUCY. This domain can be used for phishing simulations (landing pages) or the e-learning portal.

11) Create a [trusted certificate](#) for the administration of LUCY.

12) Create all required administrators [users](#) in LUCY.

13) [Download](#) all of the latest templates

14) [Update](#) LUCY to the latest version

15) Consider implementing additional [security layers](#)

16) Give LUCY a [custom branding](#)

17) Once you are all set you can try to [setup your first campaign](#). If you experience issues with mail delivery (e.g. SPAM filtering), look through [this](#) chapter. If your test emails do not arrive at all, please consult [this](#) article.

## Installation problem? Contact our support

In case you are planning to purchase LUCY or you are already a commercial client you can contact [support@lucysecurity.com](mailto:support@lucysecurity.com) to open a ticket. We will get in touch with you within 24 hours.

From:  
<https://wiki.lucysecurity.com/> - LUCY

Permanent link:  
[https://wiki.lucysecurity.com/doku.php?id=installing\\_lucy\\_in\\_virtualbox&rev=1551438313](https://wiki.lucysecurity.com/doku.php?id=installing_lucy_in_virtualbox&rev=1551438313)

Last update: **2019/07/25 12:51**

