

# Download

We offer two types of Vmware downloads:

- ESX/ESXi:
  - OVA: <https://download.phishing-server.com/dl/lucy-latest/esxi.ova>
  - OVF: [https://download.phishing-server.com/dl/lucy-latest/esxi\\_ovf.zip](https://download.phishing-server.com/dl/lucy-latest/esxi_ovf.zip)
- Vmware Image (<https://download.phishing-server.com/dl/lucy-latest/vmware.zip>)

This can be used in the following products:

- Vmware Player
- Vmware Workstation
- Vmware Esx

## Notes:

1. The Vmware Image cannot be used in Vmware ESX. If you only have access to the Vmware Image file you may need to convert it. To export a Workstation virtual machine to ESX/ESXi, it must be converted using the free VMware vCenter Converter Standalone application. The converter can be downloaded here: <https://www.vmware.com/products/converter.html>
2. ESXi version should be 6.5 or later

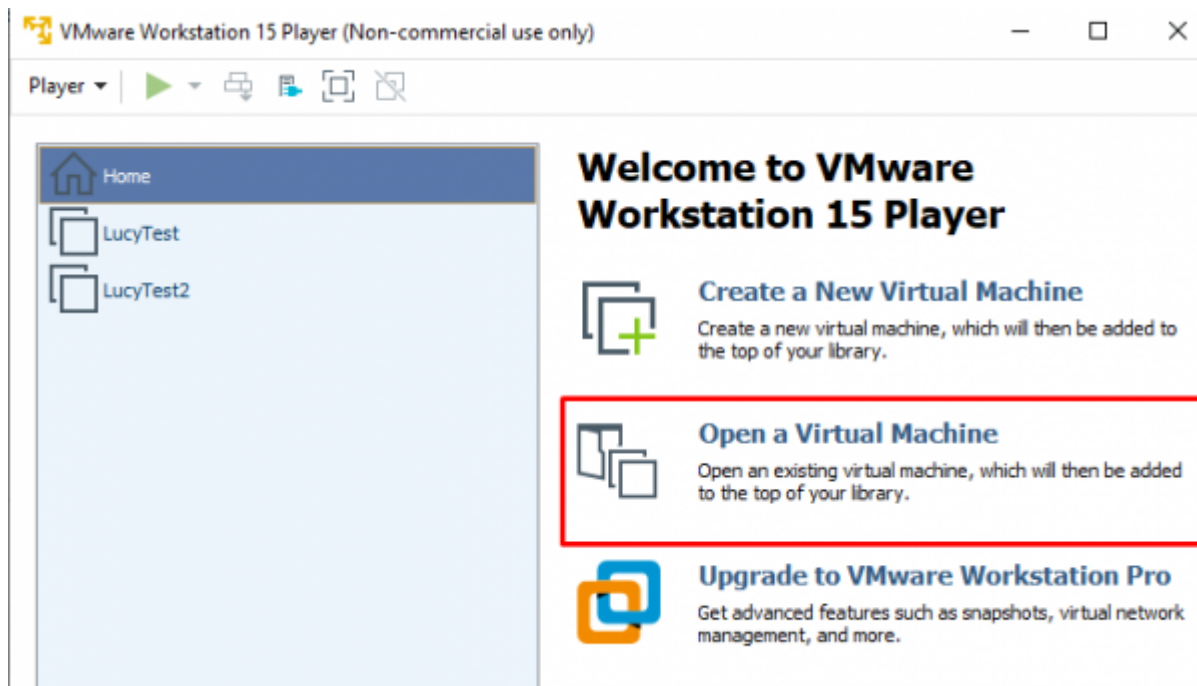
## Example: Setup LUCY in VMware Player

**STEP 1:** Download and install the free VMware Workstation Player here:  
<https://my.vmware.com/web/vmware/free>

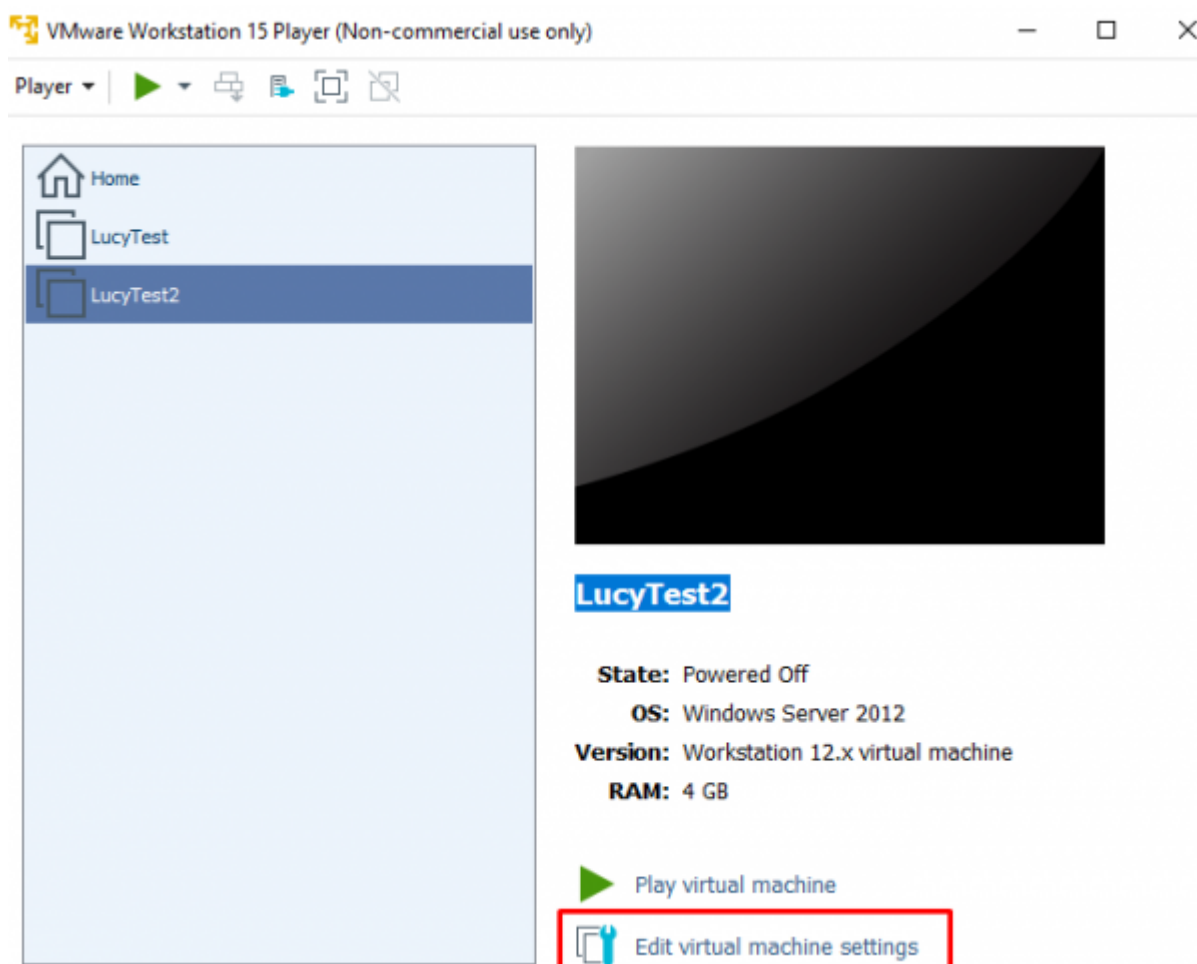
**STEP 2:** Download the latest version of Lucy (see above)

**STEP 3:** Extract the contents of the ZIP file.

**STEP 4:** In VMware Player go to the menu "File / Open" and select the phishing.vmx file.



**STEP 5:** Next click on “Edit Virtual Machine Settings”.



Please allocate at least 4 GB RAM and set the Network in "bridged" mode. For detailed hardware requirements, please visit [this chapter](#).

## Virtual Machine Settings

**STEP 6:** Start the Virtual Machine by pressing "Play".

**STEP 7:** Start the Vmware image and initiate the [installation script](#). If you already have a domain name for LUCY, please make sure that you specify it within the setup script as the certificate for the administration will be based on that domain name.

**STEP 8:** [Login](#) to LUCY with the Webbrowser. Continue the setup in the browser using the credentials provided in the setup script. If you want to install a commercial version, please provide us with the [workstation ID](#).

**STEP 9:** Define your [default mail delivery method](#) in LUCY. In case you use the build in mail server:

set the [hostname](#) for the mail server.

**STEP 10:** Setup a [domain](#) in LUCY. This domain can be used for phishing simulations (landing pages) or the elearning portal.

**STEP 11:** Create a [trusted certificate](#) for the administration of LUCY.

**STEP 12:** Create all the required administrators [users](#) in LUCY.

**STEP 13:** [Download](#) all of the latest templates

**STEP 14:** [Update](#) LUCY to the latest version

**STEP 15:** Consider implementing additional [security layers](#)

**STEP 16:** Give LUCY a [custom branding](#)

**STEP 17:** Once you are all set you can try to [setup your first campaign](#)

## Example: Run LUCY in Vmware ESXi (Sphere)

The configuration is very simple. Opposite to VMware Workstation or Player ESXi does not know a "bridged Mode" to physically connect the image to an adapter. So the only difference here is that you need to configure a virtual switch in order to connect LUCY directly to the NIC.

## Installation problem? Contact our support

In case you are planning to purchase LUCY or you are already a commercial client you can contact [support@lucysecurity.com](mailto:support@lucysecurity.com) to open a ticket. We will get in touch with you within 24 hours.

From:

<https://wiki.lucysecurity.com/> - **LUCY**

Permanent link:

[https://wiki.lucysecurity.com/doku.php?id=installing\\_lucy\\_in\\_vmware](https://wiki.lucysecurity.com/doku.php?id=installing_lucy_in_vmware)

Last update: **2020/12/18 15:50**

