

Download

We offer two types of VMware downloads:

- ESX/ESXi:
 - OVA: <http://download.phishing-server.com/dl/lucy-latest/esxi.ova>
 - OVF: http://download.phishing-server.com/dl/lucy-latest/esxi_ovf.zip
- VMware Image (<http://download.phishing-server.com/dl/lucy-latest/vmware.zip>)

This can be used in the following products:

- VMware Player
- VMware Workstation
- VMware Esx

Notes: 1. The VMware Image cannot be used in VMware ESX. If you only have access to the VMware Image file you may need to convert it. To export a Workstation virtual machine to ESX/ESXi, it must be converted using the free VMware vCenter Converter Standalone application. The converter can be downloaded here: <https://www.vmware.com/products/converter.html> 2. ESXi version should be 6.5 or later

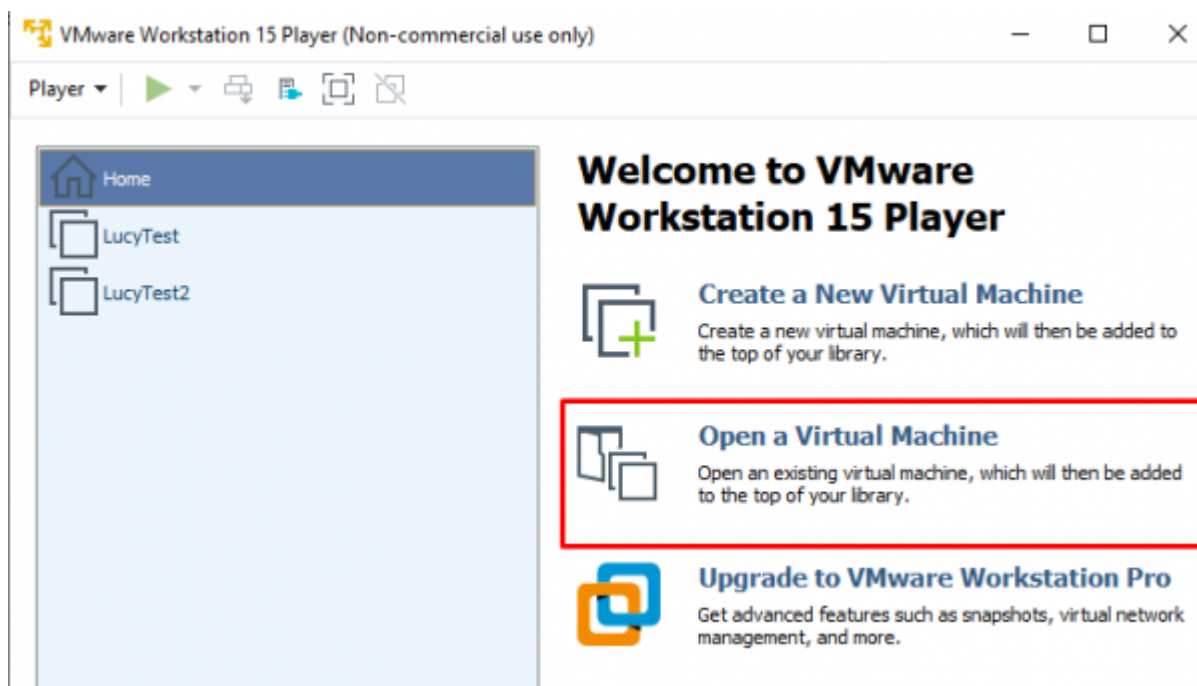
Example: Setup LUCY in VMware Player

STEP 1: Download and install the free VMware Workstation Player here:
<https://my.vmware.com/web/vmware/free>

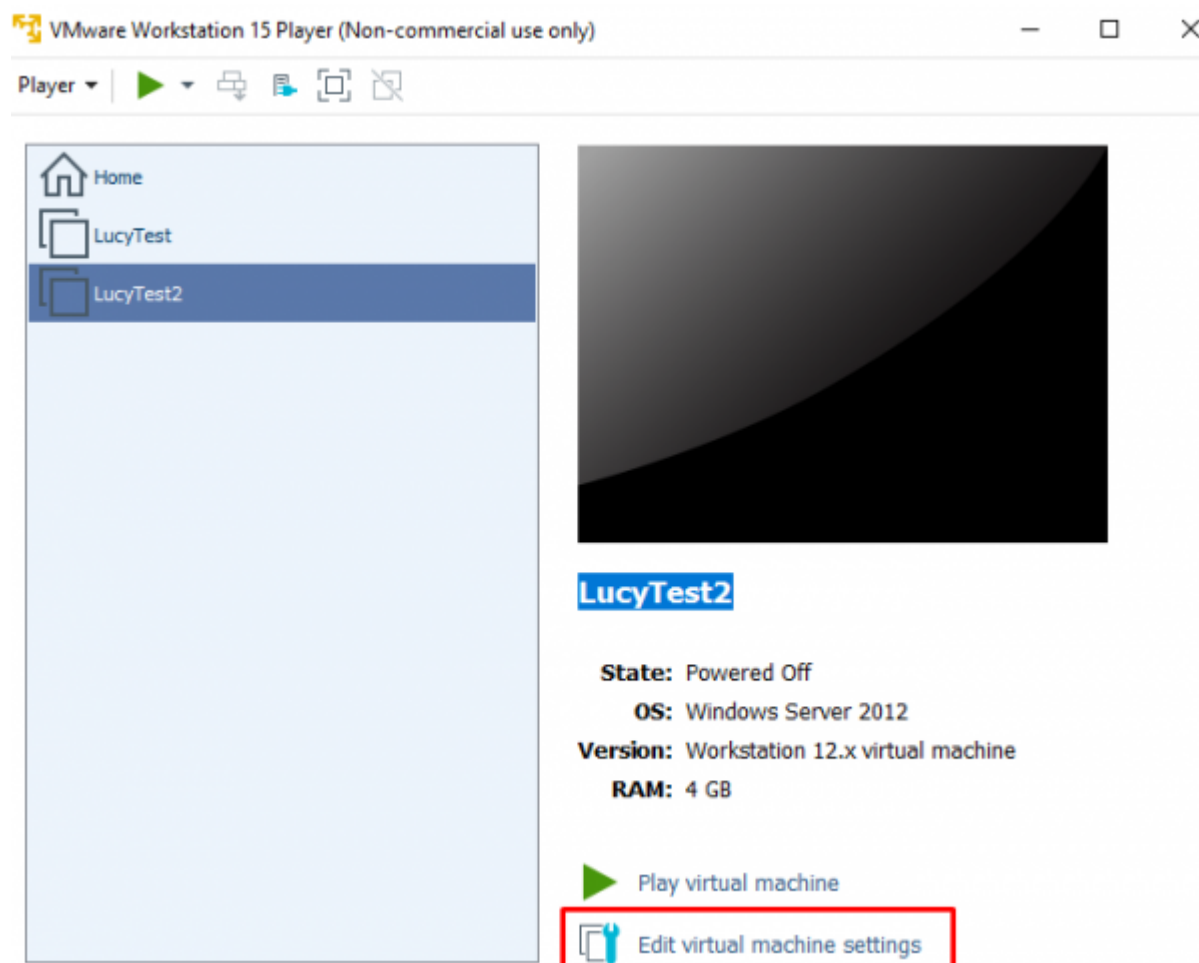
STEP 2: Download the latest version of Lucy (see above)

STEP 3: Extract the contents of the ZIP file.

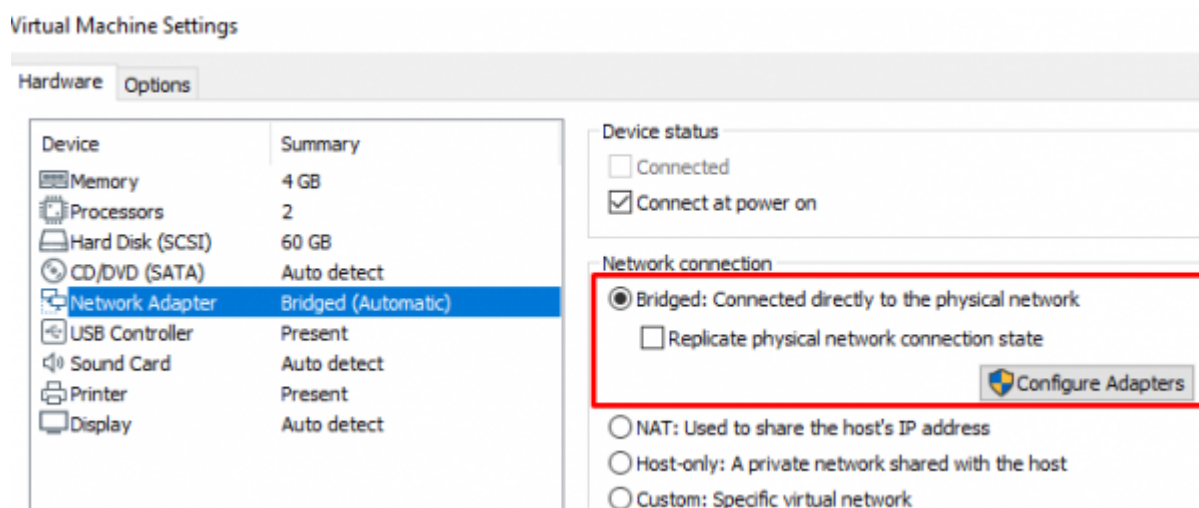
STEP 4: In VMware Player go to the menu "File / Open" and select the phishing.vmx file.



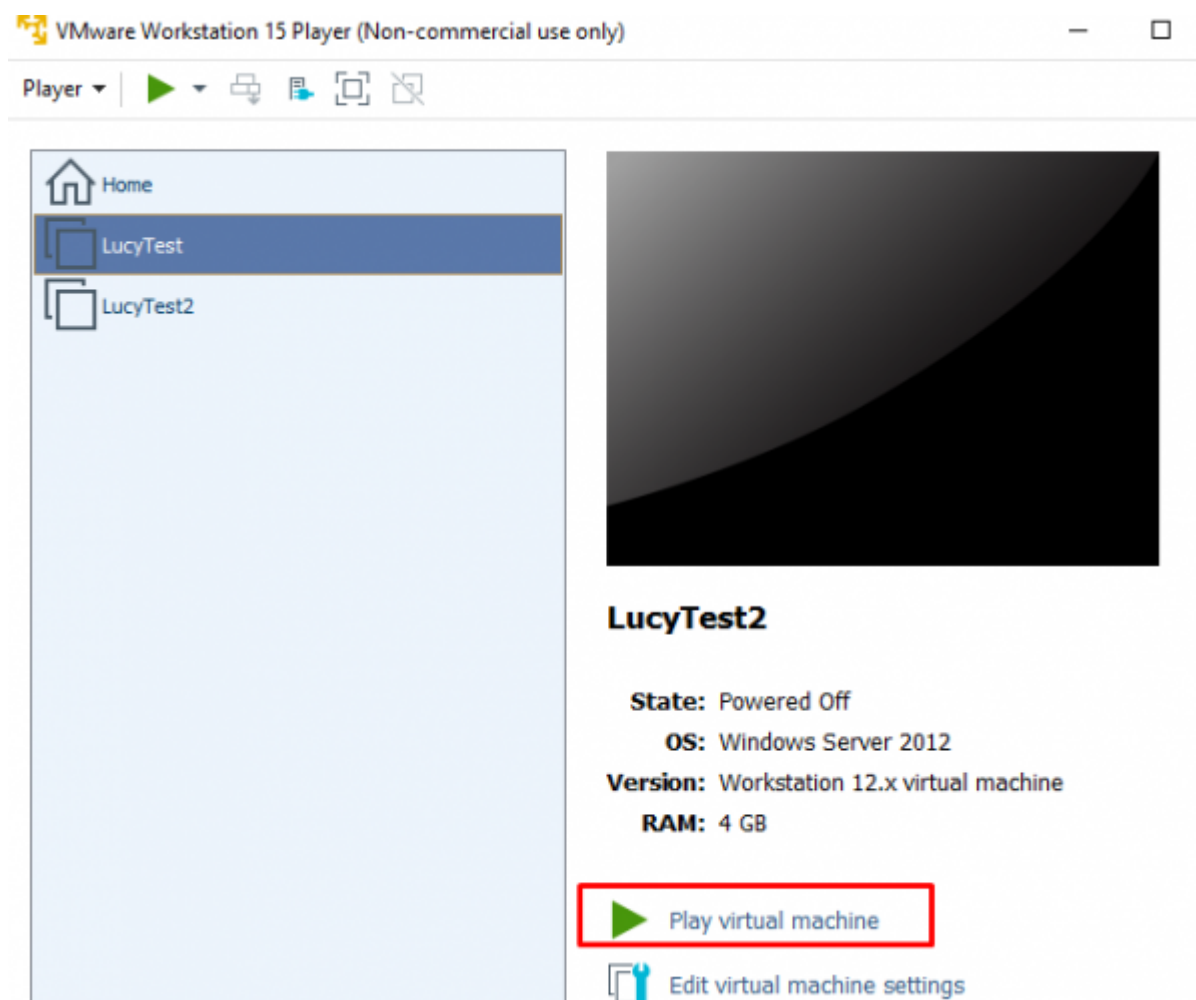
STEP 5: Next click on “Edit Virtual Machine Settings”.



Please allocate at least 2 GB RAM and set the Network in "bridged" mode. For detailed hardware requirements, please visit [this chapter](#).



STEP 6: Start the Virtual Machine by pressing "Play".



STEP 7: Start the Vmware image and initiate the [installation script](#). If you already have a domain name for LUCY, please make sure that you specify it within the setup script as the certificate for the administration will be based on that domain name.

STEP 8: [Login](#) to LUCY with the Webbrowser. Continue the setup in the browser using the credentials provided in the setup script. If you want to install a commercial version, please provide us with the [workstation ID](#).

STEP 9: Define your [default mail delivery method](#) in LUCY. In case you use the build in mail server: set the [hostname](#) for the mail server.

STEP 10: Setup a [domain](#) in LUCY. This domain can be used for phishing simulations (landing pages) or the elearning portal.

STEP 11: Create a [trusted certificate](#) for the administration of LUCY.

STEP 12: Create all the required administrators [users](#) in LUCY.

STEP 13: [Download](#) all of the latest templates

STEP 14: [Update](#) LUCY to the latest version

STEP 15: Consider implementing additional [security layers](#)

STEP 16: Give LUCY a [custom branding](#)

STEP 17: Once you are all set you can try to [setup your first campaign](#)

Example: Run LUCY in Vmware ESXi (Sphere)

The configuration is very simple. Opposite to VMware Workstation or Player ESXi does not know a "bridged Mode" to physically connect the image to an adapter. So the only difference here is that you need to configure a virtual switch in order to connect LUCY directly to the NIC.

Installation problem? Contact our support

In case you are planning to purchase LUCY or you are already a commercial client you can contact support@lucysecurity.com to open a ticket. We will get in touch with you within 24 hours.

From:
<https://wiki.lucysecurity.com/> - **LUCY**

Permanent link:
https://wiki.lucysecurity.com/doku.php?id=installing_lucy_in_vmware&rev=1568122681

Last update: **2019/09/10 15:38**

