

Install Screener in Linux

Which OS is required for the docker installation of Screener?

Screener supports docker and therefore runs on all known Linux systems (<https://www.docker.com/>). Docker Engine is supported on Linux, Cloud, Windows, and OS X. Installation instructions are available for the following:

On Linux:

- Arch Linux
- CentOS
- CRUX Linux
- Debian
- Fedora
- FrugalWare
- Gentoo
- Oracle Linux
- Red Hat Enterprise Linux
- openSUSE and SUSE Linux Enterprise
- Ubuntu

Step 1. Get Docker installed.

Skip this step if Docker is already in place.

Log into your Linux environment and get the Docker installation script by:

```
wget https://get.docker.com/ && mv index.html install.sh && bash install.sh
```

Step 2. Load Docker image.

Load the Screener Image into the Docker subsystem by:

```
docker load -i Screener_image.tar.gz
```

Step 3. Start the Docker Container.

```
docker run -d -p 80:80 -p 443:443 -p 25:25 -p 5001:5001 -p 5432:5432 --name  
screener --restart=always screener-image:latest /bin/bash /etc/run-  
services.sh
```

Step 4. Start the First Time Configuration script.

```
docker exec -it screener /etc/run-setup.sh
```

After the execution of the command, the First Time Configuration script will be displayed. It suggests doing Automatic Configuration. It is recommended to accept it by pressing "Y".

```
Subtle Mail Screener Server - First Time Configuration
-----
This script will help you to set up your Subtle Mail Screener Server virtual machine.
All setup steps are mandatory.
You will be able to change these settings later in the main window or over SSH.
-----

Do you wish to use the automatic configuration?

If you choose "yes", the software will try to configure the network and will
leave the default values for domain and user settings. Otherwise, you will
have to enter all settings manually.
* Use automatic configuration? Y or N (Y): █
```

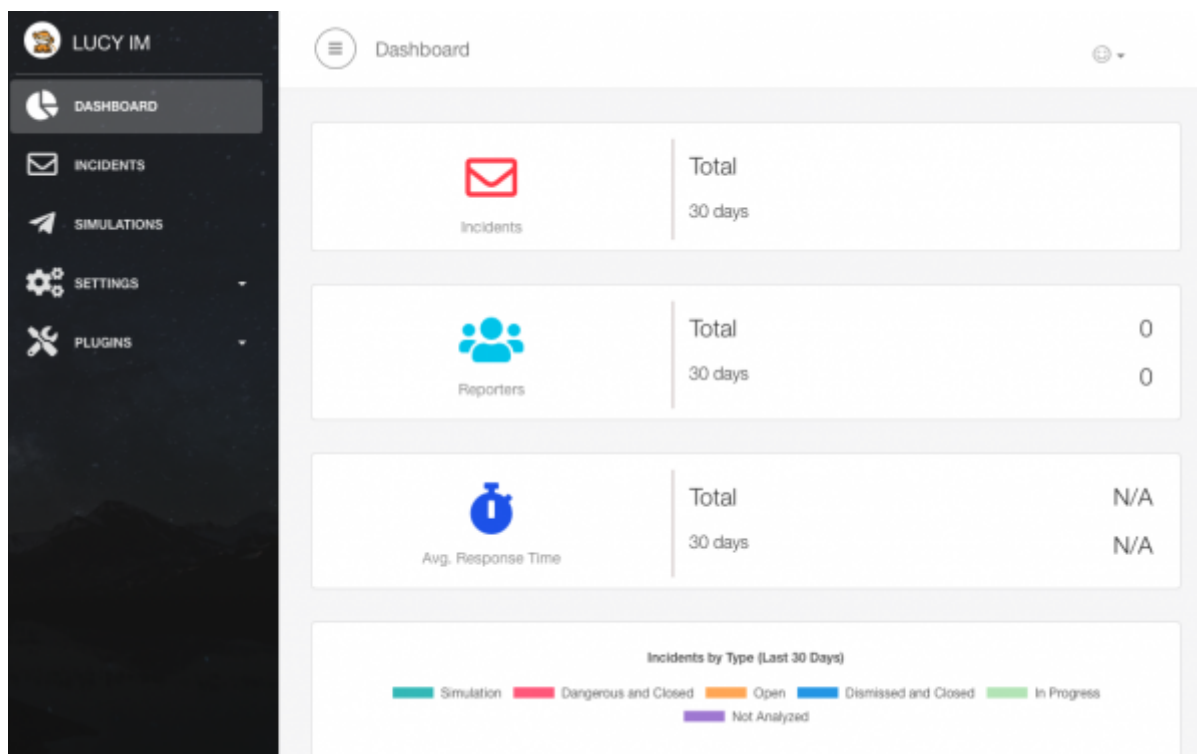
The script displays the internal Docker IPv4 and the login data. Use IPv4 of the host to get Web Access to the instance.

```
IP Address: 172.17.0.2
You can point your external domain (e.g. example.com) to this system's IP address.
This will enable you to access the web based administration of LUCY
via an official domain name (e.g. lucy.example.com).
Please start the manual setup script under 'domain configuration' to create such a domain entry.
As an alternative you can reach the web based administration of LUCY using a internal domain name.
In the automatic setup LUCY will be given the domain 'phish.local' which can be accessed
from your computer by changing the corresponding records on your nameserver or by modifying
the local hosts file on your workstation (C:\WINDOWS\system32\drivers\etc\hosts in Windows,
/etc/hosts in Mac OS X and Linux).

Enter https://172.17.0.2 or https://example.com (in case you created a host or DNS entry)
in your browser to access the system.
Use the following details to login:
* Login: user
* Password: b07or7a5
Press enter to continue...█
```

Step 5. Start using the Screener.

[This](#) article should be helpful.



Installation problem? Contact our support

In case you are planning to purchase Screener or you are already a commercial client you can contact support@lucysecurity.com to open a ticket. We will get in touch with you within 24 hours.

From:

<https://wiki.lucysecurity.com/> - LUCY

Permanent link:

https://wiki.lucysecurity.com/doku.php?id=installing_screener_linux

Last update: **2021/04/27 11:36**

