

Setup tutorial for VirtualBox

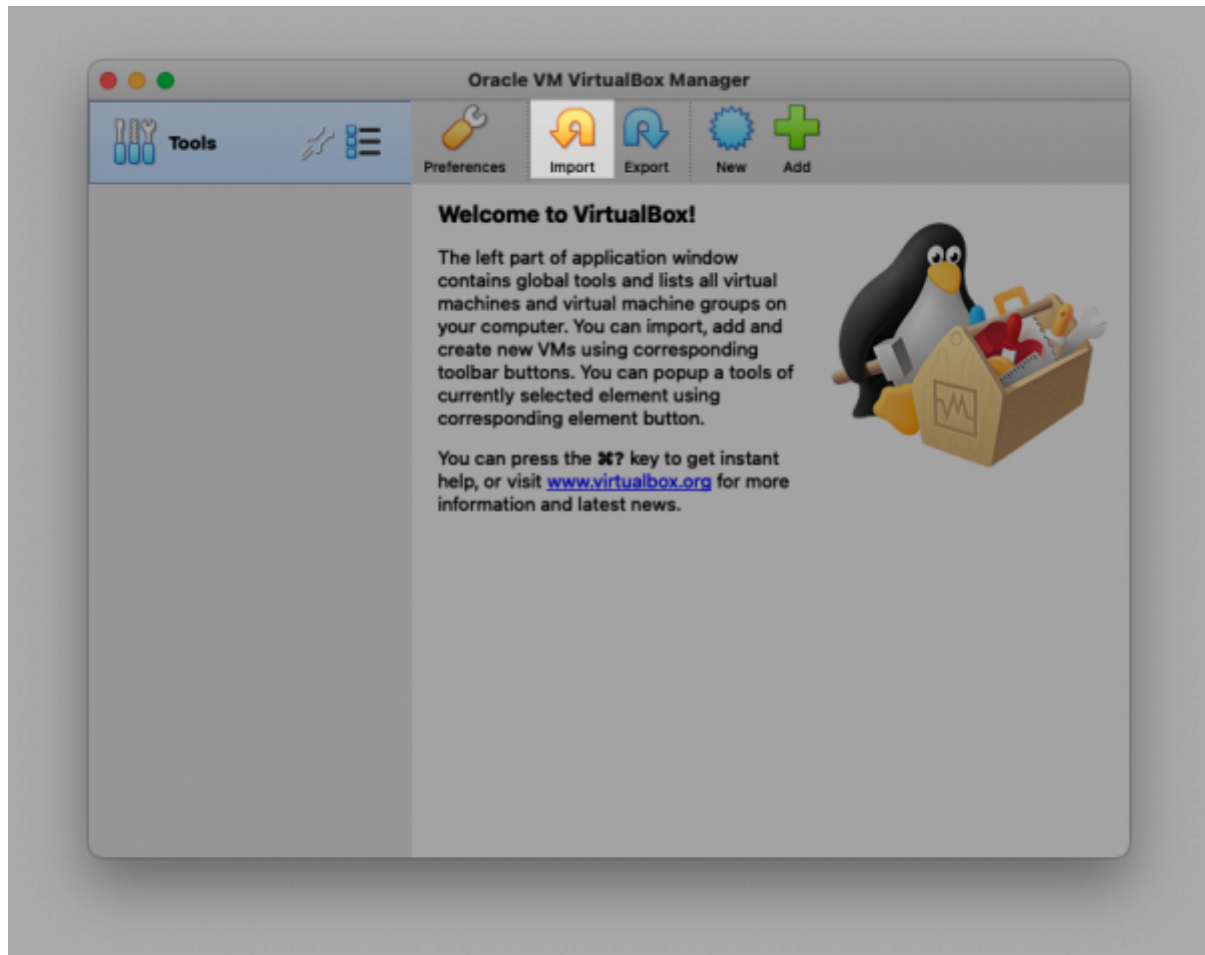
STEP 1:

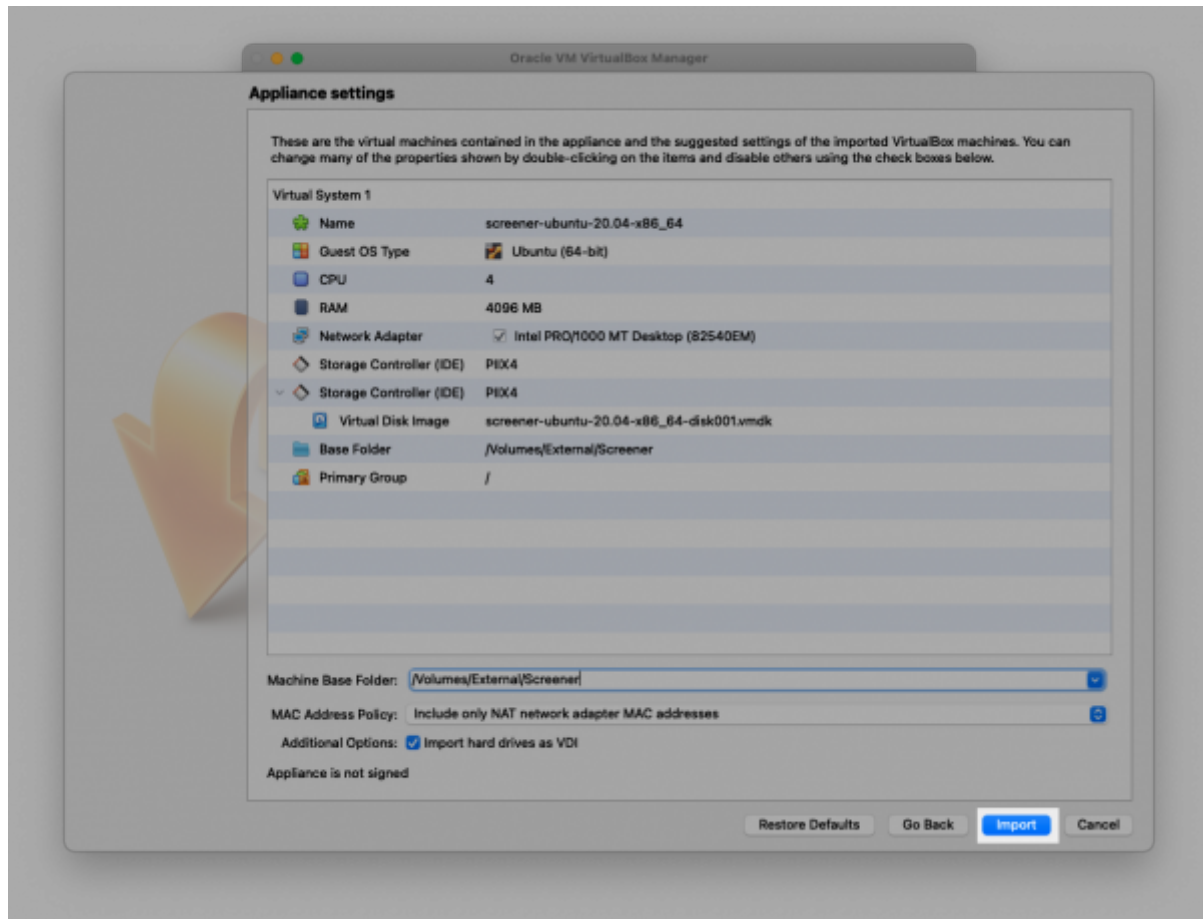
Download the latest free version of Virtual box here:

<https://www.virtualbox.org/>.

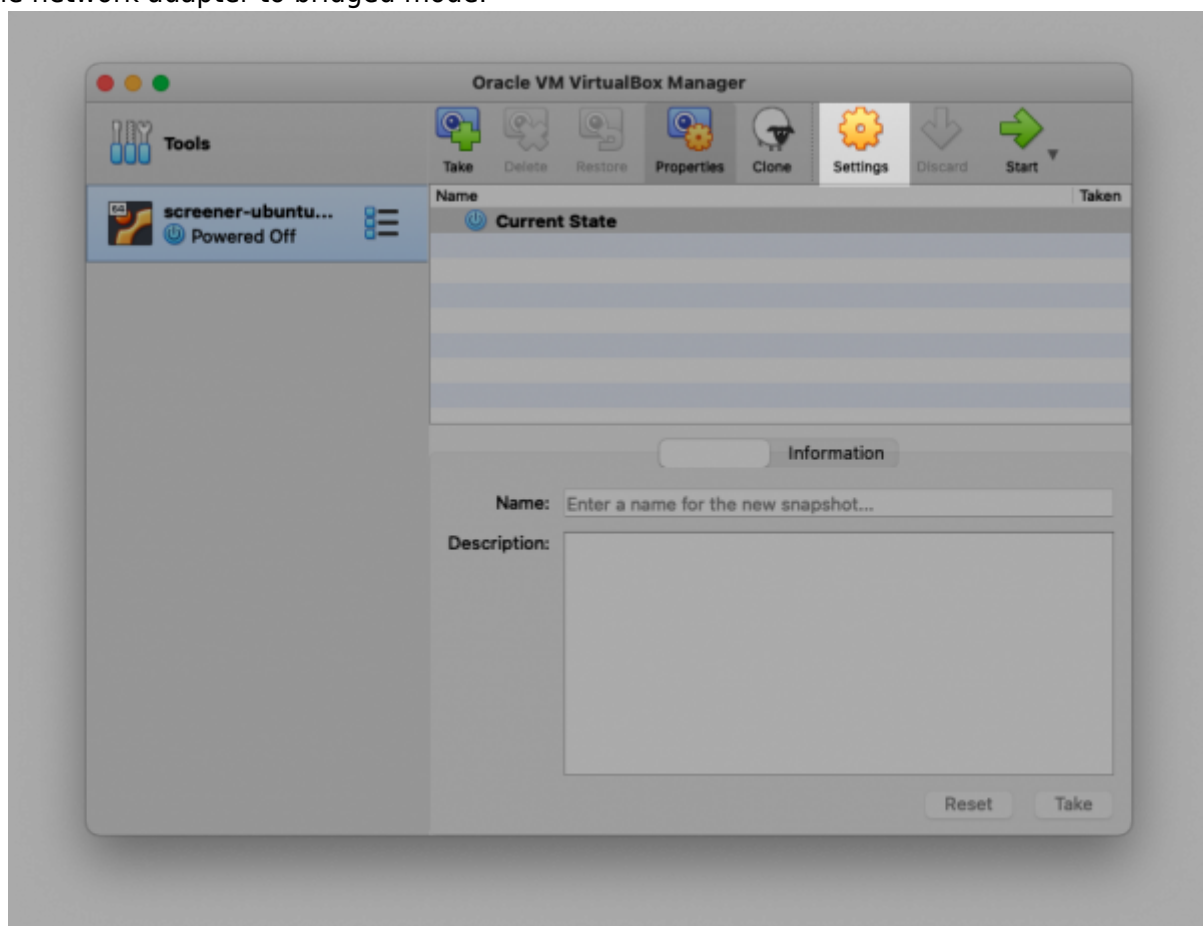
STEP 2:

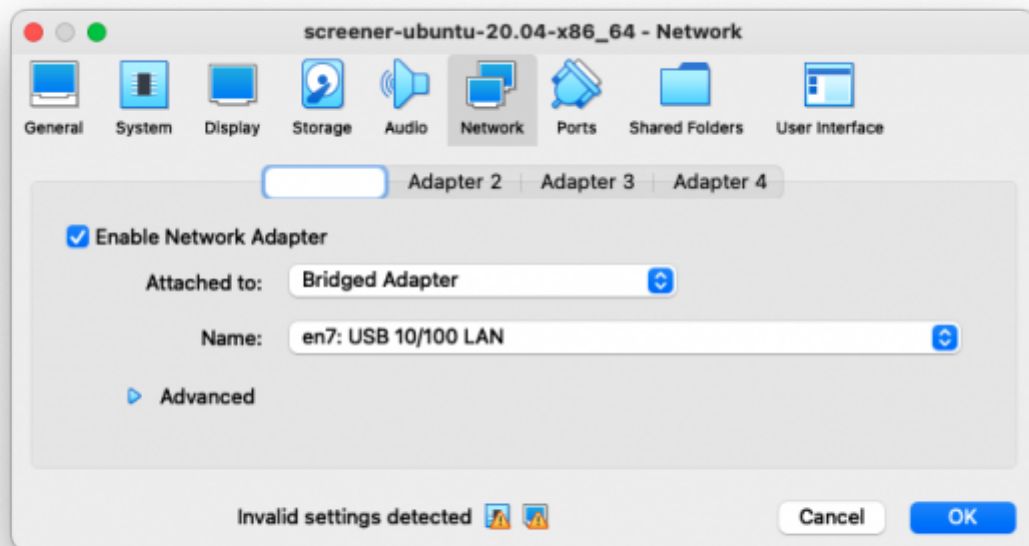
Open the Screener image file by clicking "Import appliance".



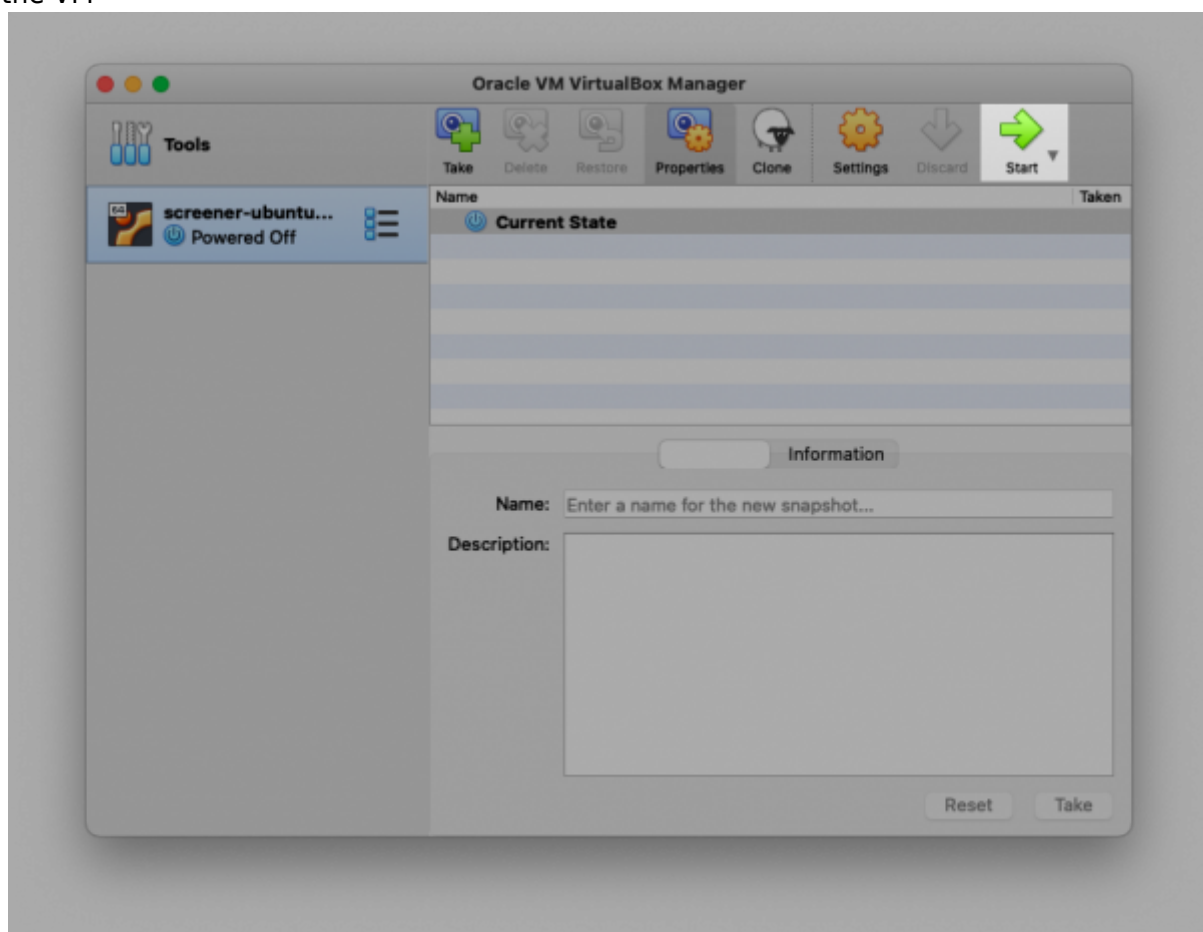
**STEP 3:**

Set the network adapter to bridged mode.

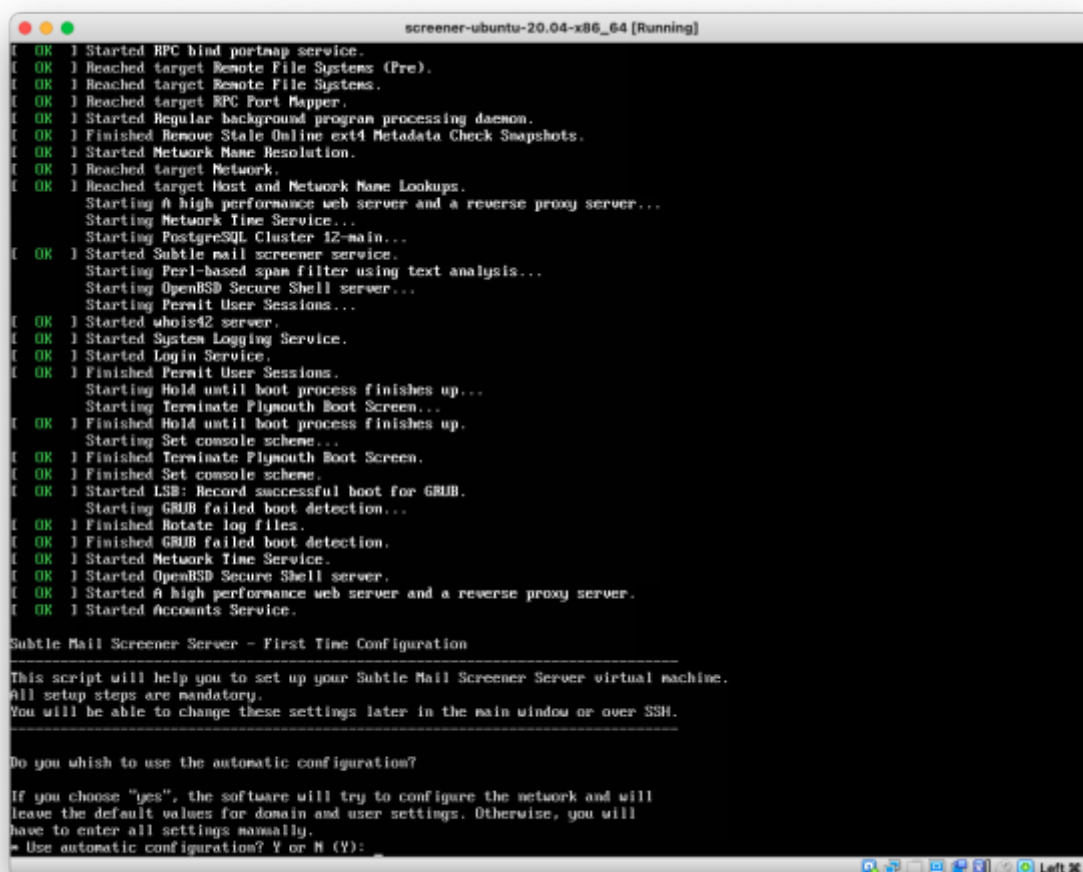


**STEP 4:**

Start the VM

**STEP 5:**

As soon as VM is started you'll see the [First Time Configuration Script](#).



```
screener-ubuntu-20.04-x86_64 [Running]
[ OK ] Started RPC bind portmap service.
[ OK ] Reached target Remote File Systems (Pre).
[ OK ] Reached target Remote File Systems.
[ OK ] Reached target RPC Port Mapper.
[ OK ] Started Regular background program processing daemon.
[ OK ] Finished Remove Stale Online ext4 Metadata Check Snapshots.
[ OK ] Started Network Name Resolution.
[ OK ] Reached target Network.
[ OK ] Reached target Host and Network Name Lookups.
Starting a high performance web server and a reverse proxy server...
Starting Network Time Service...
Starting PostgreSQL Cluster 12-main...
[ OK ] Started Subtle mail screener service.
Starting Perl-based spam filter using text analysis...
Starting OpenBSD Secure Shell server...
Starting Permit User Sessions...
[ OK ] Started whois42 server.
[ OK ] Started System Logging Service.
[ OK ] Started Login Service.
[ OK ] Finished Permit User Sessions.
Starting Hold until boot process finishes up...
Starting Terminate Plymouth Boot Screen...
[ OK ] Finished Hold until boot process finishes up.
Starting Set console scheme...
[ OK ] Finished Terminate Plymouth Boot Screen.
[ OK ] Finished Set console scheme.
[ OK ] Started LSB: Record successful boot for GRUB.
Starting GRUB failed boot detection...
[ OK ] Finished Rotate log files.
[ OK ] Finished GRUB failed boot detection.
[ OK ] Started Network Time Service.
[ OK ] Started OpenBSD Secure Shell server.
[ OK ] Started a high performance web server and a reverse proxy server.
[ OK ] Started Accounts Service.

Subtle Mail Screener Server - First Time Configuration
-----
This script will help you to set up your Subtle Mail Screener Server virtual machine.
All setup steps are mandatory.
You will be able to change these settings later in the main window or over SSH.
-----

Do you wish to use the automatic configuration?

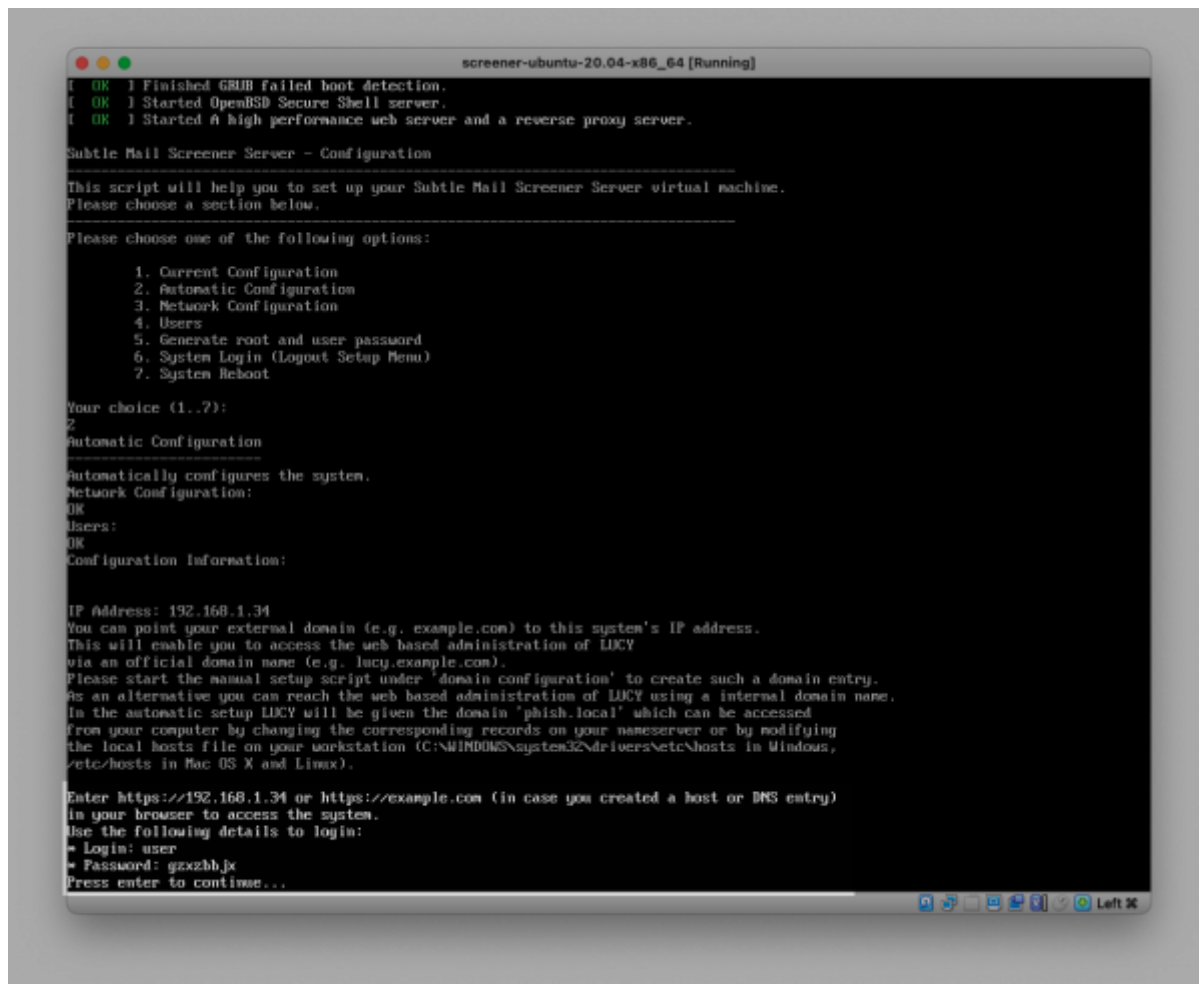
If you choose "yes", the software will try to configure the network and will
leave the default values for domain and user settings. Otherwise, you will
have to enter all settings manually.
* Use automatic configuration? Y or N (Y):
```

STEP 6:

It is recommended to accept the automatic configuration. Please confirm by pressing "Y" and Enter.

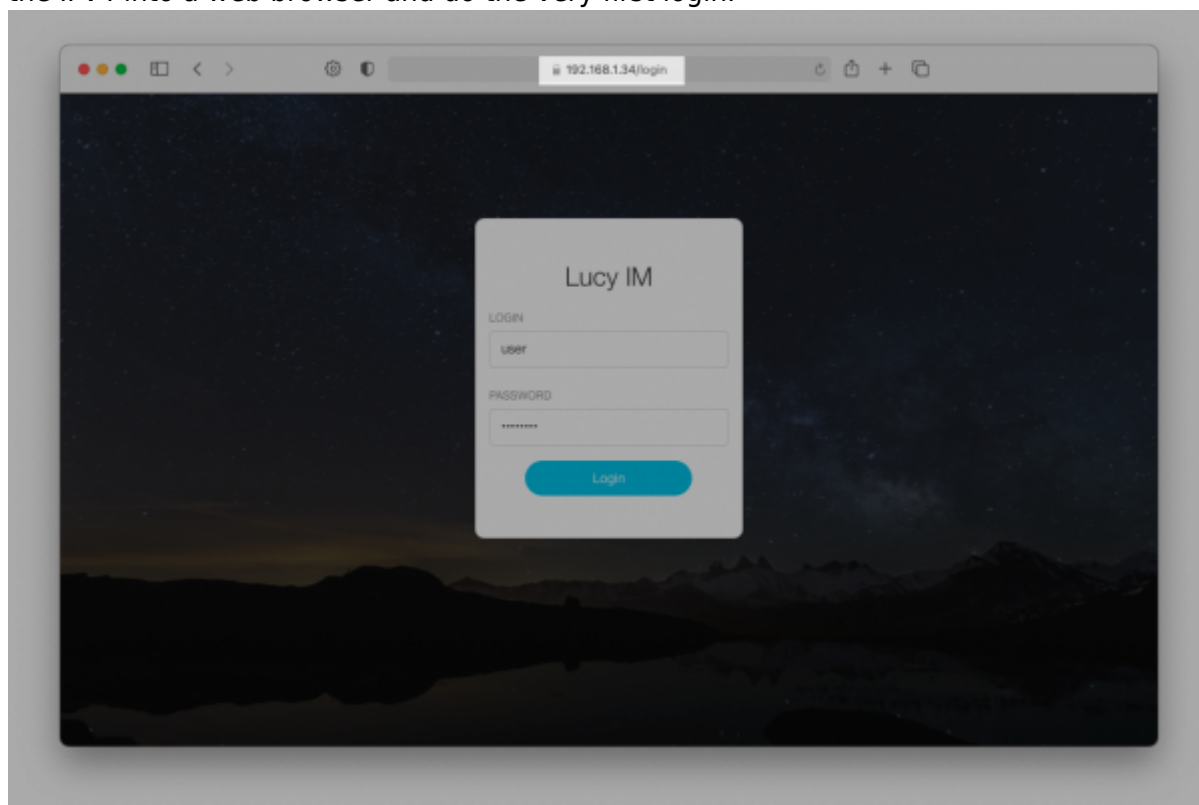
STEP 7:

As soon as ready, VM terminal displays information for Web UI login, such as network address and user credentials.



STEP 8:

Enter the IPv4 into a web browser and do the very first login.



STEP 9:

The system is installed and ready to [use!](#)

Installation problem? Contact our support

In case you are planning to purchase Screener or you are already a commercial client you can contact support@lucysecurity.com to open a ticket. We will get in touch with you within 24 hours.

From:

<https://wiki.lucysecurity.com/> - LUCY

Permanent link:

https://wiki.lucysecurity.com/doku.php?id=installing_screener_virtualbox

Last update: **2021/04/27 18:59**

