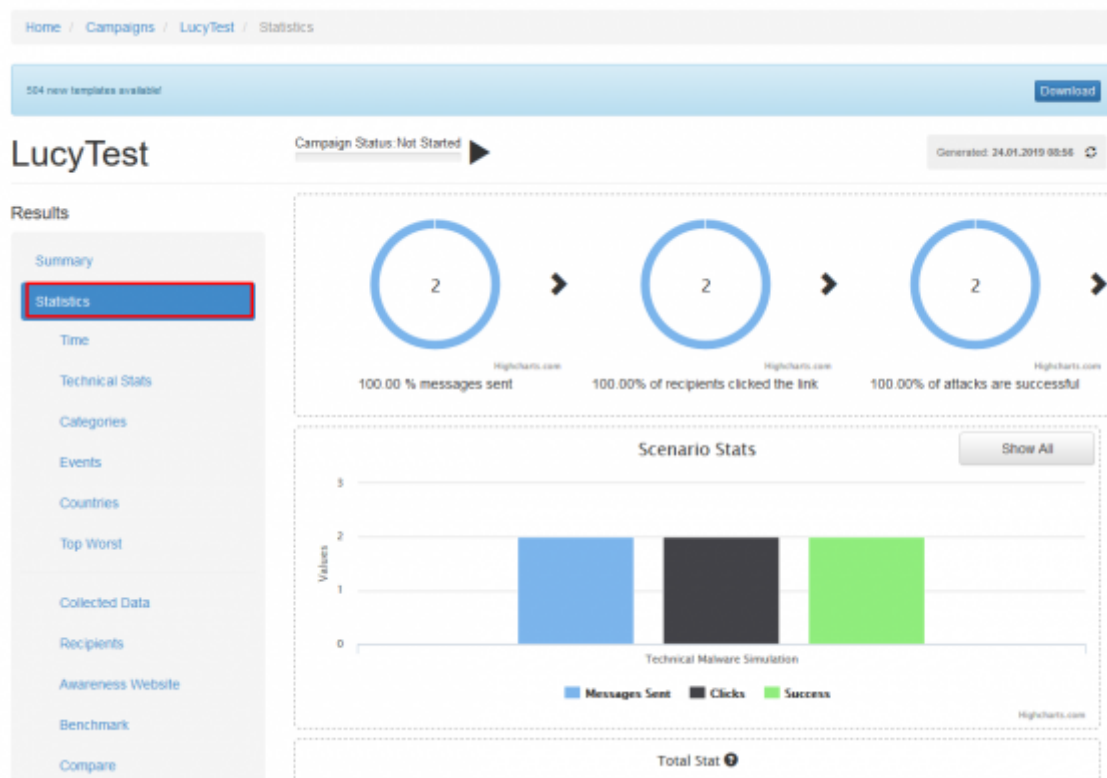


Monitor the progress of the campaign: all available campaign statistics

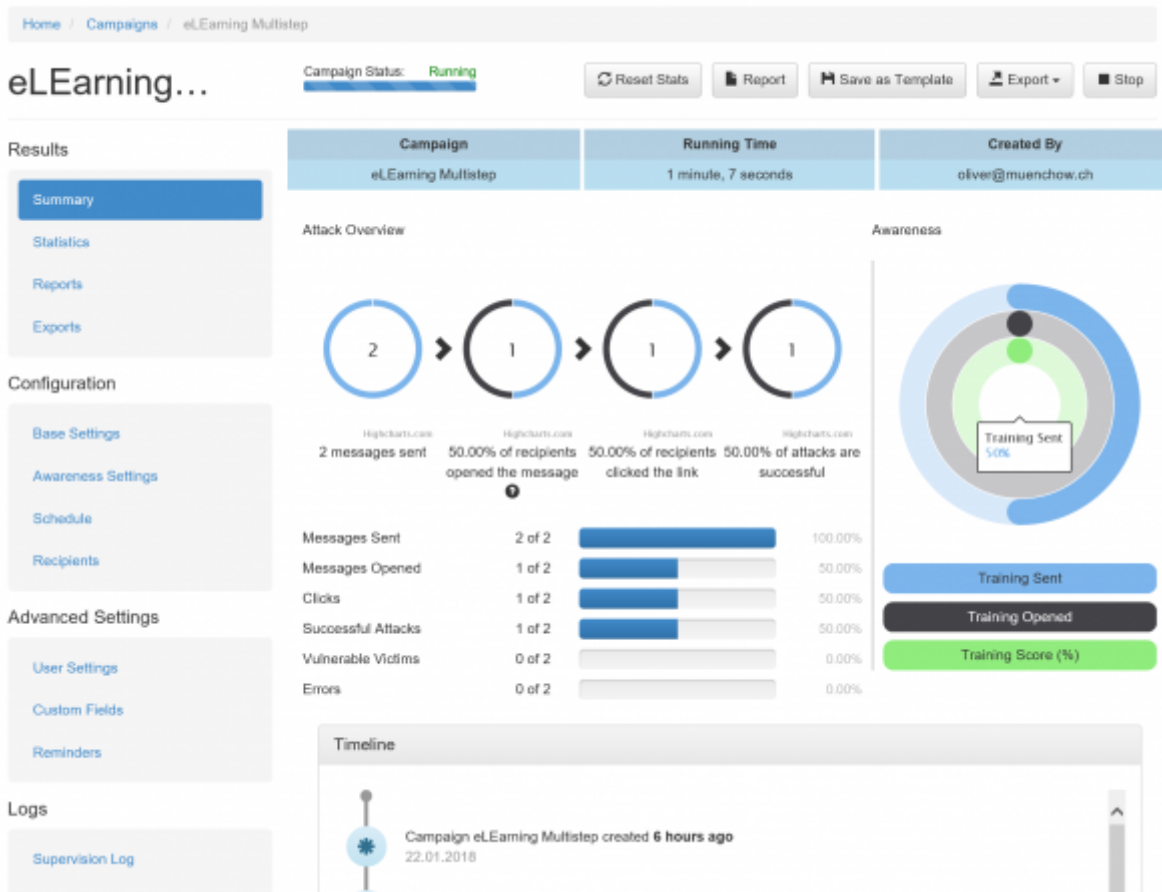
Where can I see the logged data?

The progress of the campaign can always be monitored in "real-time" under the statistics tabs or after a campaign using the [reporting options](#) or the CSV export. If you run only one scenario, you can look at the statistics in the Top Menu called "Statistics".



Real time statistics in LUCY

When you access the "summary" overview page you see the overall campaign statistics. Only if you add an awareness content to your campaign, you will see the circle statistics:



If you access "statistics" tab, you will have at least 11 submenus:

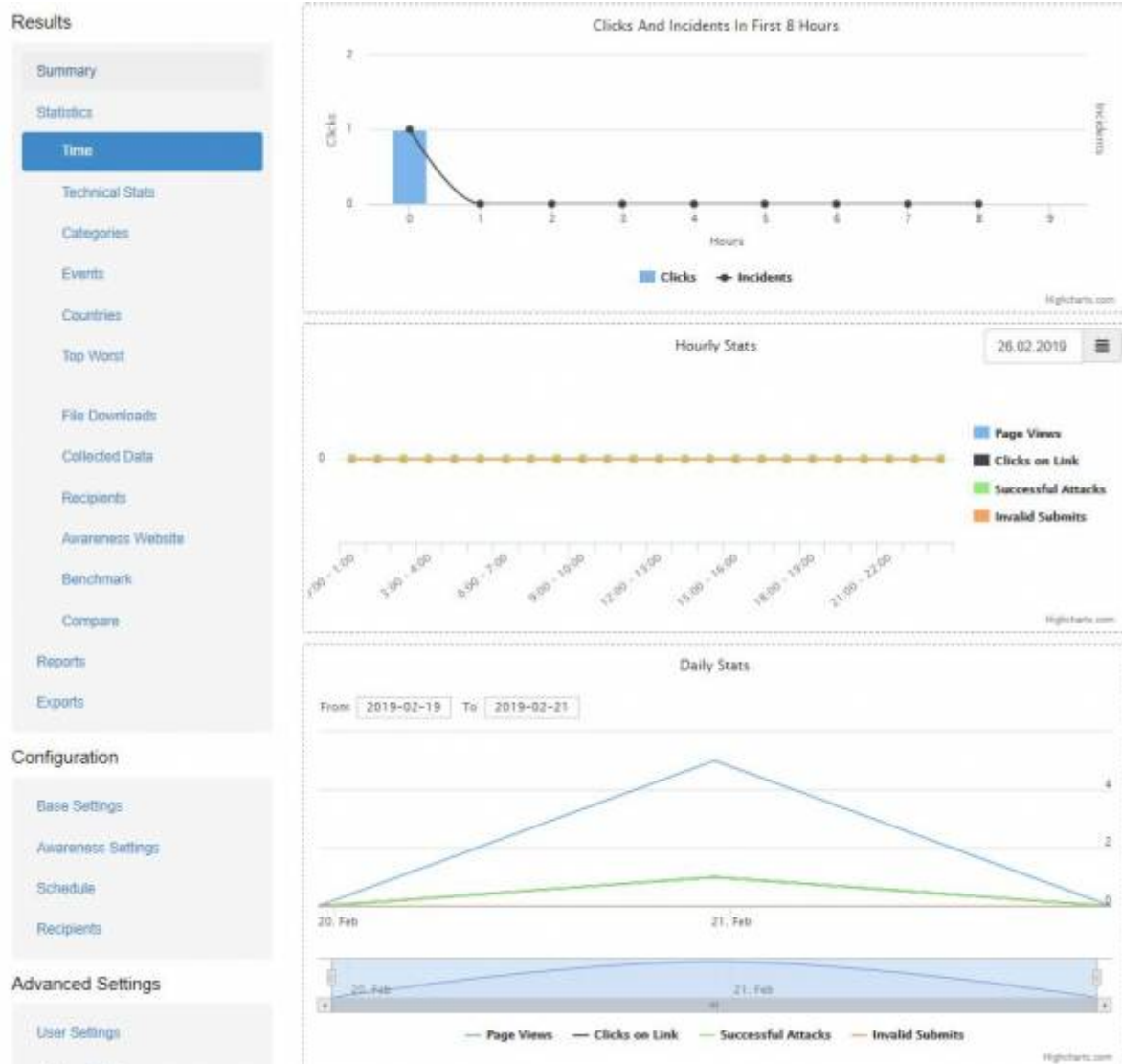
- time
- technical stats
- categories
- events
- countries
- top worst
- collected data
- recipients
- awareness website
- benchmark
- compare



What attack related metrics can be logged in LUCY?

The following list of information can be collected within a phishing campaign:

- **Emails Opened:** Recipients opened the email (this statistic is based on a tracking image within the email. Many email clients will block the automatic download of images. As a result, this number might not be very accurate). Please read more about this feature [here](#).
- **Link Clicks:** Recipients clicked the link in the email (a unique randomized URL that is generated by LUCY to match the link with the email recipient). Each user (SMS or Mail) gets a unique link (see [chapter](#) how links are created). It can be activated only once using a GET request from the client. So if a client clicks on the link and forwards the email to a different person, who also clicks on that link, it will still be considered only as one click. As a result any SPAM filter that follows the links within the email before delivering it to the final recipient might generate some false positives. Therefore it is important to always perform a test run.
- **Successful Attacks:** Recipients submitted data in a form (e.g. login data that is submitted via a form based POST request), clicked on a link, executed a file etc. A complete list of [success status](#) is here.
- **Invalid submits:** Recipients submitted data in a form (e.g. login data) - but it did not meet the filters in those input fields which you might have defined. More info can be found [here](#).
- **Hourly Stats:** Page views, link clicks, successful attacks, invalid submits, etc.

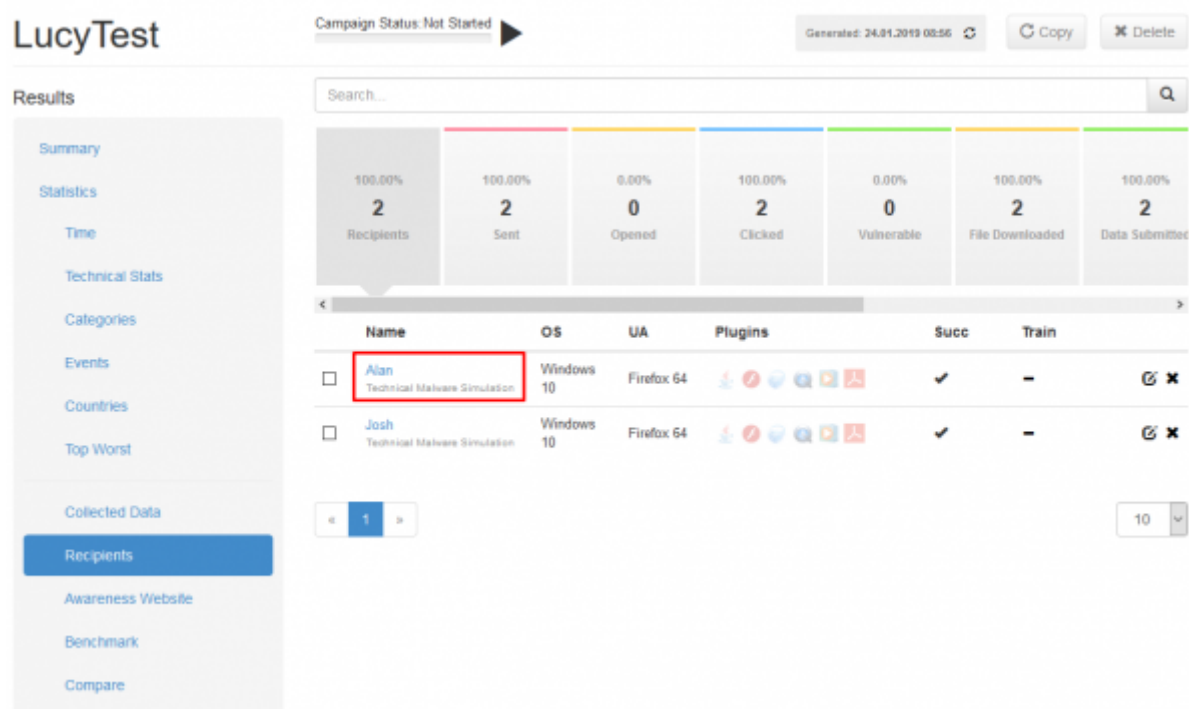


- **Daily Stats:** Page views, link clicks, successful attacks, invalid submits, etc.
- **Recipient Criteria's:** Based on the usage of additional fields in the [recipients list](#) you can sort and filter the statistics for each field
- **Operating System** Of recipient. This information is based on the user agent string. See https://en.wikipedia.org/wiki/User_agent
- **Browser type** Of recipient: This information is based on the user agent string. See https://en.wikipedia.org/wiki/User_agent
- **Browser Plugins** Of recipient: This information is based on the user agent string. See https://en.wikipedia.org/wiki/User_agent
- **File downloads** (Requires you to append the ?tracking variable at the end of the download link). More details can be found [here](#).
- **IP:** Remote IP address of your recipient. If your user is accessing the internet using a firewall, web proxy or any other gateway, LUCY will only display the remote accessible IP. Please note: sometimes your security products (firewall, mail gateway, provider infrastructure, web proxy, local scanner, IPS etc.) may examine the URL's sent to a recipient. Therefore it is possible that "unknown" IP's appear in the log where access is measured based on the request in the recipient's browser. The URL defined within the campaign for the respective recipient is called (%link% variable). This link consists of the domain of the scenario and a random string of

numbers and letters containing at least 16 digits (e.g.

<http://your.domain.com/b1gyg9ux95ilkoom>). This URL cannot be guessed or brute forced by a computer within a reasonable period of time. Since the recording of the access is based on the logfile of the webserver, which measures whether the random URL's generated in the system appears in the queries, false positives or errors can be completely excluded in the statistics.

- Vulnerable Browser | Vulnerable Client:** Based on the user agent, LUCY will tell you if there is any misuse. A User Agent is a short string that web browsers and other applications send to identify themselves to web servers. A user agent string contains the following information: Mozilla/[version] ([system and browser information]) [platform] ([platform details]) [extensions]. Unfortunately, most browsers falsify part of their User-Agent header in an attempt to be compatible with more web servers. LUCY also is only enumerate major versions (like IE 11) but not minor versions which would show the actual patch status, some results might be false positives. Example: if you don't use the latest IE (e.g. IE10) we will query the CVE database and present all vulnerabilities for IE10 (http://www.cvedetails.com/vulnerability-list/vendor_id-26/product_id-9900/version_id-138705/). But that does not mean the IE is not patched. This only displays all possible vulnerabilities for this browser version. Within the campaign statistics the vulnerable clients are displayed with an exclamation mark:



- Client and network based vulnerability report:** If you embed [LHFC](#) within a campaign you can collect output from up to 45 vulnerability checks
- Additional stats:** LUCY can determine additional info like:
 - Flash
 - VBScript
 - PhoneGap
 - Google Gears
 - Silverlight
 - Web Socket
 - QuickTime

- RealPlayer
- WMP
- WebRTC
- ActiveX
- Session Cookies
- Persistent Cookies
- Tor
- FireBug
- Popup Blocker
- Unsafe ActiveX

* **Time based stats:** How long does the user stay on each landing page?



* **User history:** Historical user statistics

Recipients

Awareness Website

Benchmark

Compare

Reports

Exports

Configuration

Base Settings

Awareness Settings

Schedule

Recipients

Advanced Settings

User Settings

Custom Fields

Reminders

Logs

Supervision Log

Message Log

Errors

Oil

Demo Baseline - Scenario

Windows 10

Chrome 72

Name

E-mail

Phone

User History

Oil

oliver@lucysecurity.com

-

Plugins

Vulnerable Applications (0)

Reputation Level

Chrome PDF Plugin

Chrome PDF Viewer

Native Client

N/A

Lure Sent

Message Sent

Training Sent

Reported

-

21.02.2019 13:53:38

✓

21.02.2019 14:02:39

Success Rate

Click Rate

Clicks

Successful Attack

Trained

Out Of Office

Bounced

Responded

Training Results

12.72%

16.36%

1

✓

✓

-

-

-

Scenario Total Time

index.html

account.html

18.074

5.76

12.314

Downloaded Files

file.exe

OS

Browser

IP

Windows 10

Chrome 72.3626

85.0.178.152

Phishing Noob

82.00%

Attacked:

Success:

Trained:

Reported:

23

4

1

2

History

Reported email

Scenario: Demo Baseline - Scenario

2019-02-21 14:02

Trained

Scenario: Demo Baseline - Scenario

2019-02-21 13:57

Attack succeeded

Scenario: Demo Baseline - Scenario

2019-02-21 13:54

File download

File downloaded at 2019-02-21 13:54:33

2019-02-21 13:54

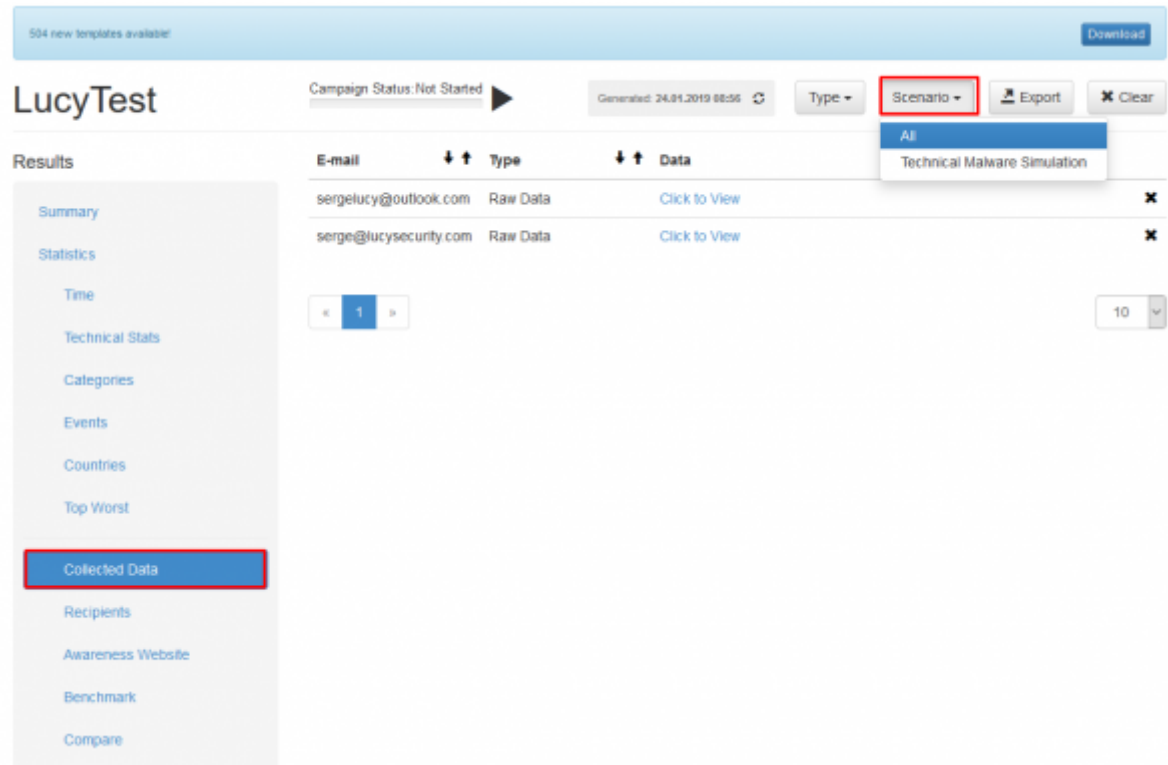
Awareness submitted

2019-02-21 13:54

View the collected data from users (passwords, uploads etc.)

The actual collected data (user passwords, Output from Tools) are located within the scenario. You need to select “Collected Data” and the related scenario.

LUCY - <https://wiki.lucysecurity.com/>



When you click “Click to View”, you are able to see the detailed data.



See advanced recipient statistics

When you click on Recipients, you can see the details about the user who clicked on a link, participated in an awareness campaign etc. Just click on the name and a sub menu with all details will open. The exact output of BeEF or the awareness page can be opened beneath each recipient (just click on the link to expand the details):

Home / Campaigns / Video Stats in Mixed Template / Statistics / Recipients

1 new templates available!Download

Video Stat...Campaign Status: Not Started

ScenarioPluginOSUACopyDelete

Search...

100%9Recipients

77%7Sent

0%0Opened

22%2Clicked

0%0Vulnerable

0%0File Downloaded

22%2Data Submitted

Name	OS	UA	Plugins	Succ	Train	
<input type="checkbox"/> thismaildoesnotexist@adhdzujzdajshdghdhd.ch <small>Status</small>	-	-		-	-	
<input type="checkbox"/> oli.muenchow@gmail.com <small>Status</small>	-	-		-	-	
<input type="checkbox"/> wronmgh@odasd.com <small>Status</small>	-	-		-	-	
<input type="checkbox"/> info@muenchow.ch <small>Status</small>	-	-		-	-	
<input type="checkbox"/> info@phishing-server.com <small>Status</small>	-	-		✓	✓	

Name-

E-mailinfo@phishing-server.com

Phone-

Lure Sent-

Message Sent16.02.2017 17:06:16

Training Sent✓

Reported-

Success Rate50.00%

Click Rate50.00%

Clicks1

Successful Attack✓

Trained✓

Downloaded Files-

OS-

Browser-

IP-

Plugins

ActiveTouch General Plugin Container 105

Adobe Acrobat 15.23.20053

Citrix Online Web Deployment Plugin 1.0.0.104

Citrix offline plug-in 32

Google Update 1.3.32.7

HP Client Security Manager 1.8.3.1

Intel® Identity Protection Technology 4.0.56.0

Java Deployment Toolkit 8.0.1210.13

Java(TM) Platform SE 8 U 1.8.0_121

Microsoft Lync Web App Plug-in 5.0.8308.301

Microsoft Office 2016

VLC Web Plugin 2.2.1.0

Zoom launcher - 3.0.1

Vulnerable Applications (0)

N/A

Timeline

Message sent 2 weeks ago
16.02.2017

Clicked on link 2 weeks ago
16.02.2017

Attack succeeded 2 weeks ago
16.02.2017

Trained 2 weeks ago
16.02.2017

Submitted data 2 weeks ago
16.02.2017
[View Details](#)

Quiz Results

Open Invoice	-	0 sec
Lottery PDF	-	0 sec
UPS Invoice	-	0 sec
Confidential Document	-	0 sec
Amazon	-	0 sec
Ebay	-	0 sec
Facebook Notification	-	0 sec
Twitter Password	-	0 sec
Visa Verifier	-	0 sec
PayPal	-	0 sec
Docusign	-	0 sec
LinkedIn	-	0 sec
Gmail	-	0 sec
Skype Video Message	-	0 sec
Doodle	-	0 sec
Netflix Notification	-	0 sec
Instagram	-	0 sec
iTunes Receipt	-	0 sec
Mastercard Notification	-	0 sec
Webex	-	0 sec
Skype	-	0 sec
Video Played	✓	15 sec
		15 sec

Note - Opened Emails Statistics: The general statistics are presented on the campaign Overview page. It also contains a statistics called "Opened Emails". This statistic is based on a tracking image within the email. Many email clients will block the automatic download of images. As a result, this number might not be very accurate.



Note - Clicks Statistics: Some users might click on the link twice or refresh the webpage. This has also an effect on the "Clicks" or "Form Submits".

Starting with LUCY 4.4 you have also a user history, that will show you all historical events related to a specific user for this and other campaigns. Please click on "user history" to open the timeline below:

The screenshot displays the LUCY security dashboard interface. On the left, a sidebar contains navigation menus for 'Recipients', 'Configuration', 'Advanced Settings', and 'Logs'. The 'Recipients' menu is highlighted with a red box. The main content area is divided into two sections. The top section, 'User History', is also highlighted with a red box and contains a table of campaign statistics. The bottom section, 'History', shows a timeline of events. A red arrow points from the 'User History' header to the 'History' section.

User History	
Lure Sent	—
Message Sent	15.11.2018 08:48:55
Training Sent	—
Reported	—
Success Rate	50.00%
Click Rate	50.00%
Clicks	1
Successful Attack	✓
Trained	—
Downloaded Files	—
OS	Windows 10
Browser	Chrome 70.3538
	192.168.1.125

History

- Clicked on link (2018-11-15 08:47)
Scenario: test
- Attack succeeded (2018-11-15 08:47)
Scenario: test
- Message sent (2018-11-15 08:48)
Scenario: test

Timeline

- Campaign Conditional Awareness started (15.11.2018 08:29:41)
- Message sent (15.11.2018 08:48:55)
- Clicked on link (15.11.2018 08:47:27)
- Attack succeeded (15.11.2018 08:47:27)

Track e-learning (awareness)

LUCY allows you to monitor the [eLearning Stats](#) and track:

- Who participated in an eLearning,
- Which question got answered correctly
- How much time it took in average to answer a question
- Success_rate: how many times has the user been successfully attacked in one or multiple campaigns
- Click_rate: how many times has the user clicked on a link in one or multiple campaigns
- Answers_count: in how many interactive elements did the user participate?
- Correct_answers_count: how many of the interactive elements did the user answer correctly?
- Quiz_time_spent: how much time did the user spent on an interactive element in general or in particular
- Video watched: if a video was watched and if: was it watched until the end?

How can LUCY monitor the learning access?

Similar to the phishing page each awareness landing page has a randomized URL variable which could look like this: <http://your.awareness-page.com/Zhsdg3> (where "Zhsdg3" is a randomized string generated in LUCY that is associated with a unique mail address). When the user makes a GET request to that URL, LUCY knows that the eLearning page has been accessed by the user and the user counts as trained. It is irrelevant for LUCY if on that awareness page has an embedded video or just some static HTML. If you want to go further and track if and how specific content is accessed within a landing page you need to click on "quiz enabled" within the awareness page (see http://www.lucysecurity.com/PS/doc/dokuwiki/doku.php?id=create_an_interactive_e-learning_template). You can use this embedded JavaScript to track basically any interaction on the awareness website (e.g. Place a START button to play a video and set the starting point for the script accordingly). If you want to see examples on how the interactive eLearning is implemented we recommend taking a look at some existing templates (e.g. http://www.lucysecurity.com/PS/doc/dokuwiki/doku.php?id=interactive_elearning_pages).

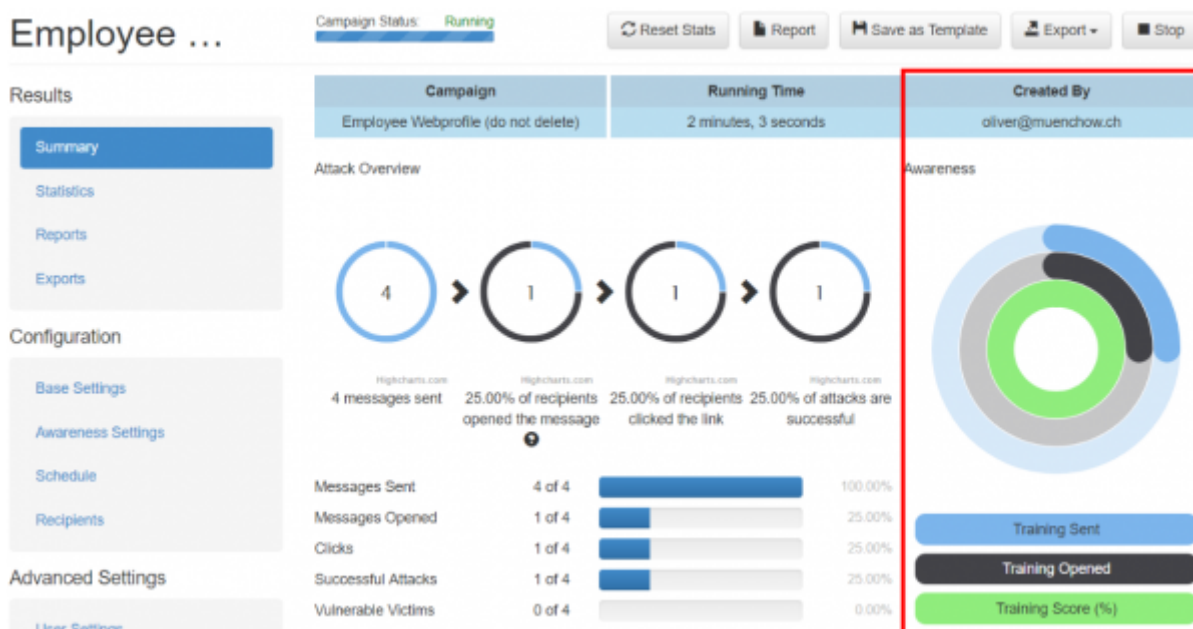
How can the awareness data be exported?

You can access the awareness data via:

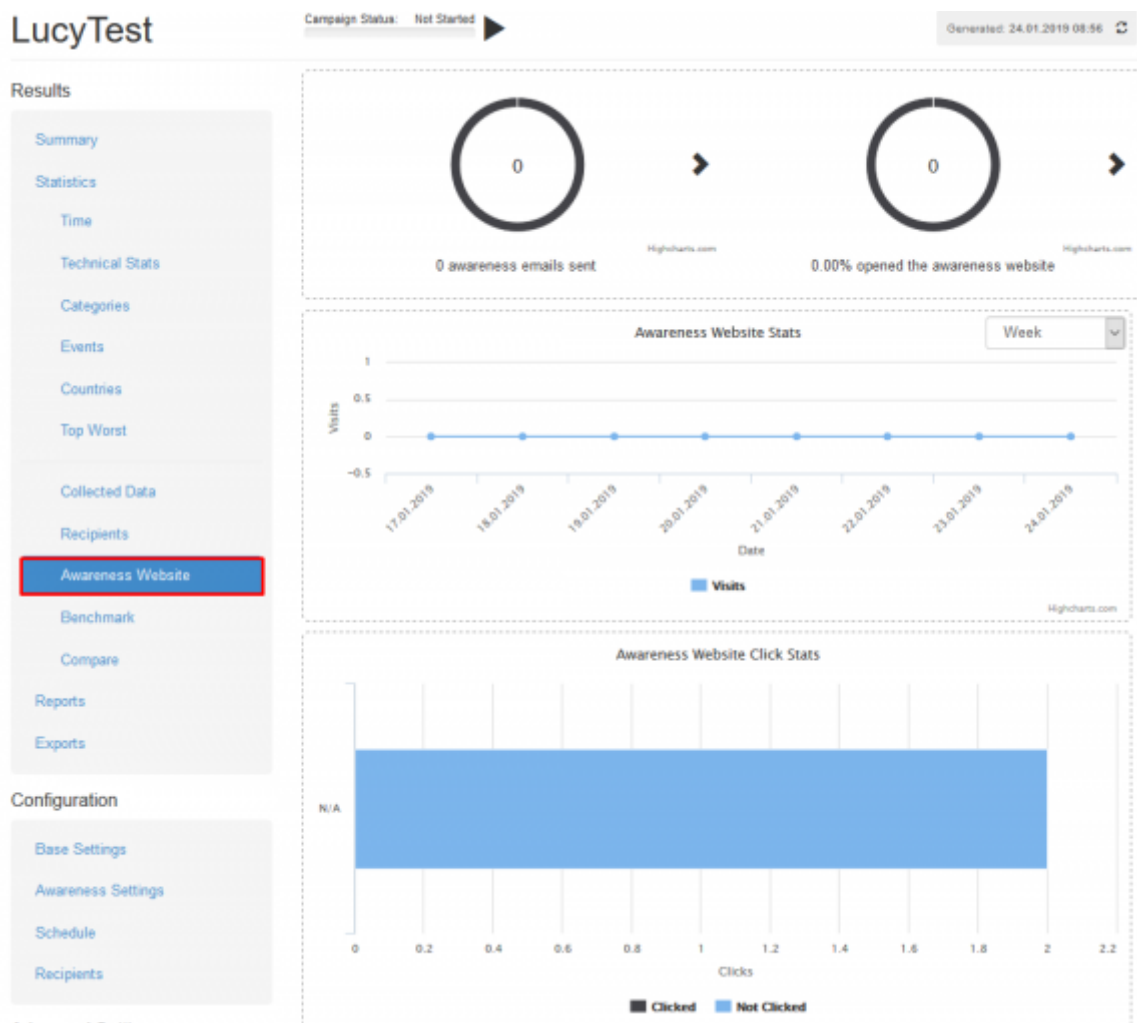
- Reports (Raw CSV Report or PDF/HTML Export)
- Statistics/Recipients (expand recipient to see the details)
- Statistics/Awareness Website

Where are the training results located on the dashboard?

a) General training statistics can be accessed within a campaign under "summary"



b) The summarized training results can be accessed within a campaign under "statistics/awareness website"



c) The detailed training results for each recipients can be accessed under "statistics/recipients". You can sort the table by trained/untrained and at the bottom you can see the exact results (answers) from the specific user. If configured, you could also see the [reputation level](#)

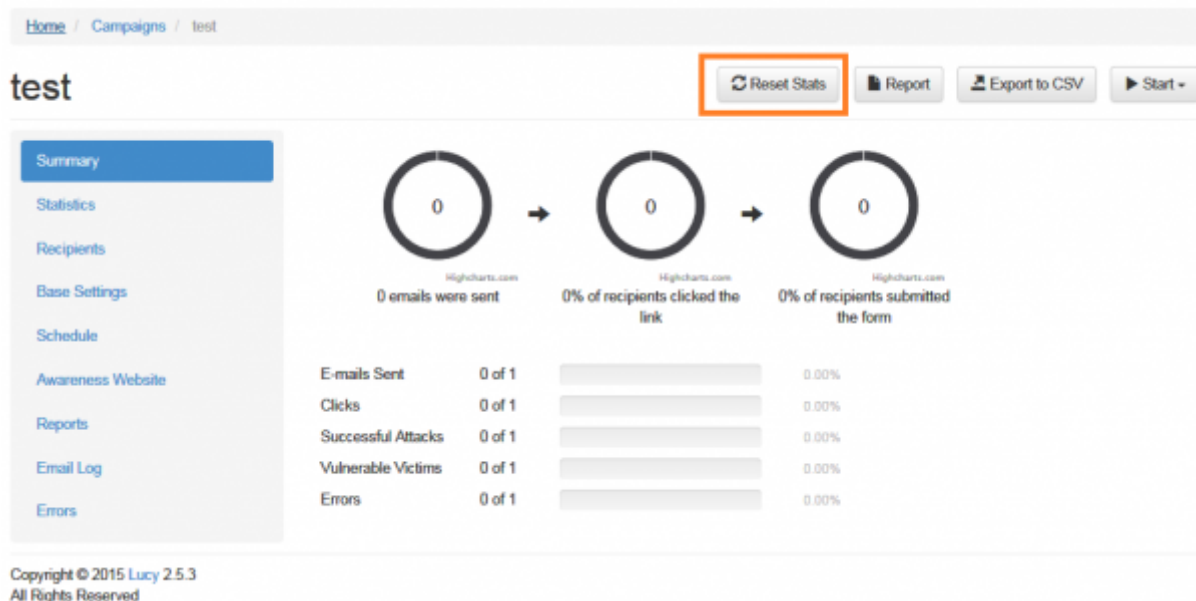
Where can the recipient see his training results?

The recipient can access his training results via the [end user page](#), where he is also able to print a certificate if he passed the training.

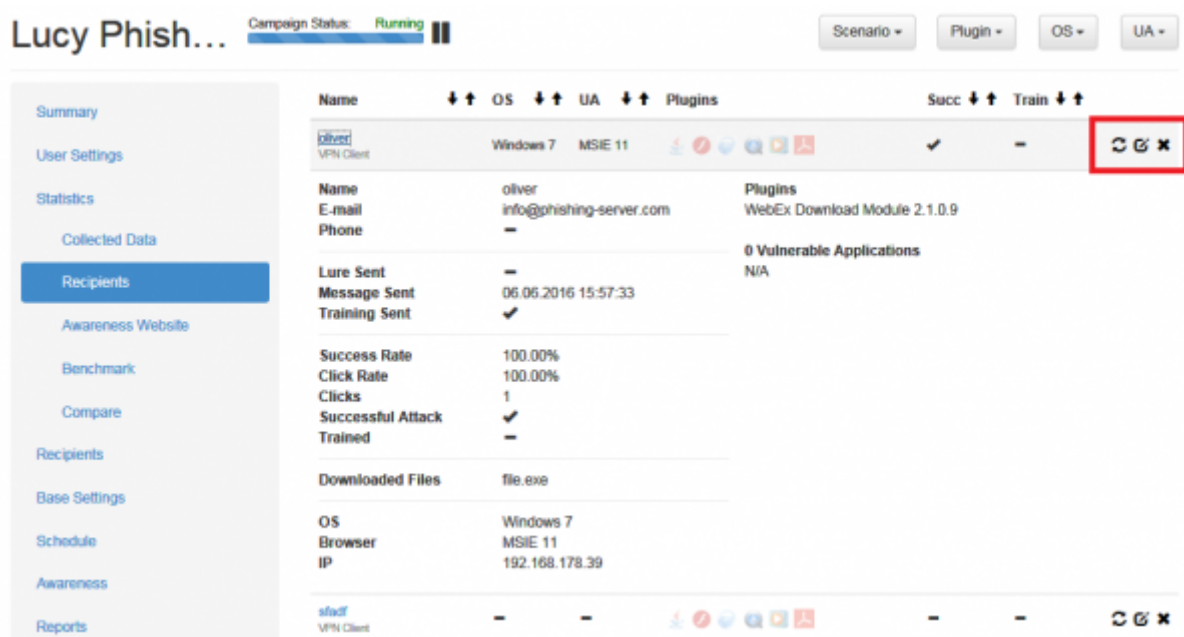
Note: If you want to track how users perform on an interactive quiz you need to [activate this feature](#).

Deleting Data in Statistics

- **Delete all Stats:** Press "Reset Stats" - the data in the database for this campaign is deleted and cannot be restored.



- **Delete Stats from a Single User:** Go into Stats/Recipients and delete the specified user. The user will not appear in the stats anymore.



- **Delete Stats from a User Group:** If you remove a group from a running campaign all stats associated with this group will be deleted.

Compare Different Campaigns

Using the compare button within a single campaign you are able to compare the campaign statistics among different campaigns. In order to compare campaigns please go to "statistics" within the campaign and then click on "compare".

Lucy Phishi...

Campaign Status: Not Started



Results

Please select campaigns to compare.

Summary

Statistics

Time

Technical Stats

Categories

Events

Countries

Top Worst

Collected Data

Recipients

Awareness Website

Benchmark

Compare

Campaign

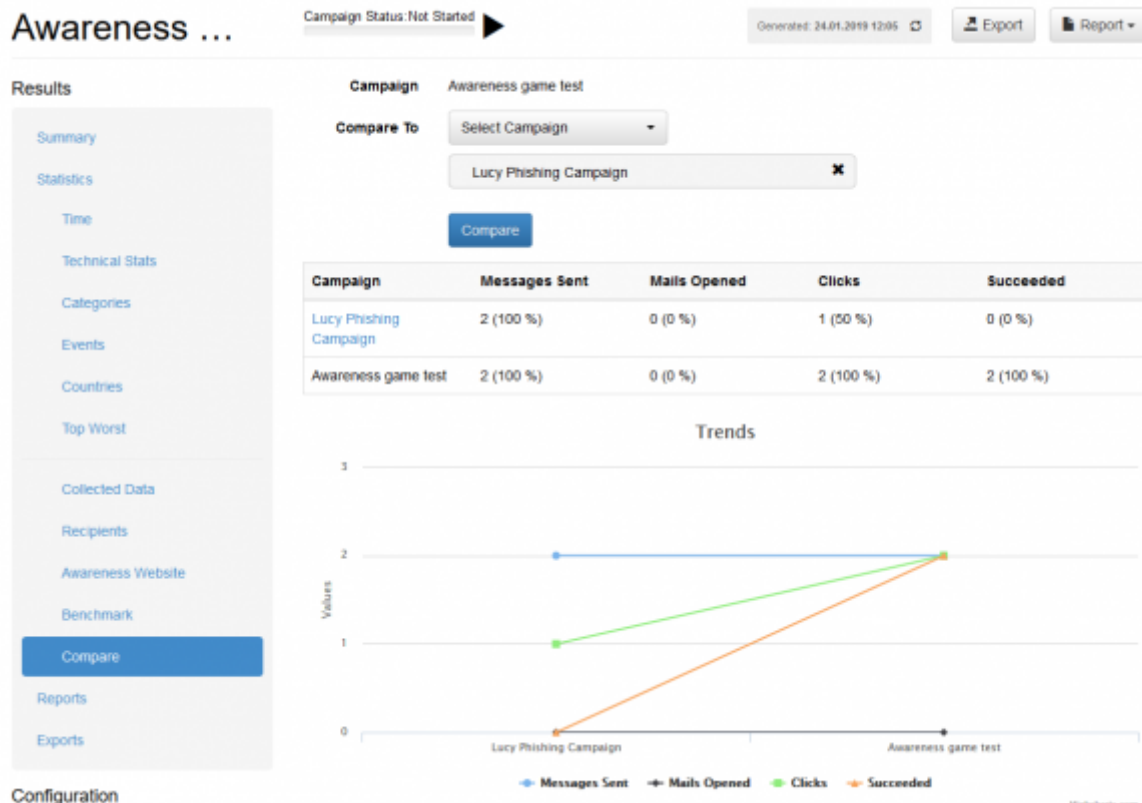
Lucy Phishing Campaign

Compare To

Select Campaign

Compare

LUCY will allow you to compare your current campaign against all other campaigns visible for the current client.



Common Questions regarding the stats

- **How can a click rate in recipient statistics be ever less than 100 %?** That is calculated for a recipient over several campaigns: if the recipient has participated in 10 campaigns and clicked on a link in 5 campaigns, the click rate will be 50%. The same with the success rate
- **How is it possible the awareness dashboard shows "N/A" for certain countries?** Lets say a campaign has 3 victims, 1 from Switzerland and 2 N/A (as they never clicked). These 2 charts show - the percentage of users from countries that clicked or not clicked the awareness webpage link (it shows 100% from Switzerland never clicked and 100% from N/A never clicked) and the second chart shows absolute numbers - 1 from Switzerland never clicked the awareness link and 2 from N/A never clicked the link as well.

From:
<https://wiki.lucysecurity.com/> - LUCY

Permanent link:
https://wiki.lucysecurity.com/doku.php?id=monitor_a_campaign_statistics

Last update: **2019/07/25 12:49**

