

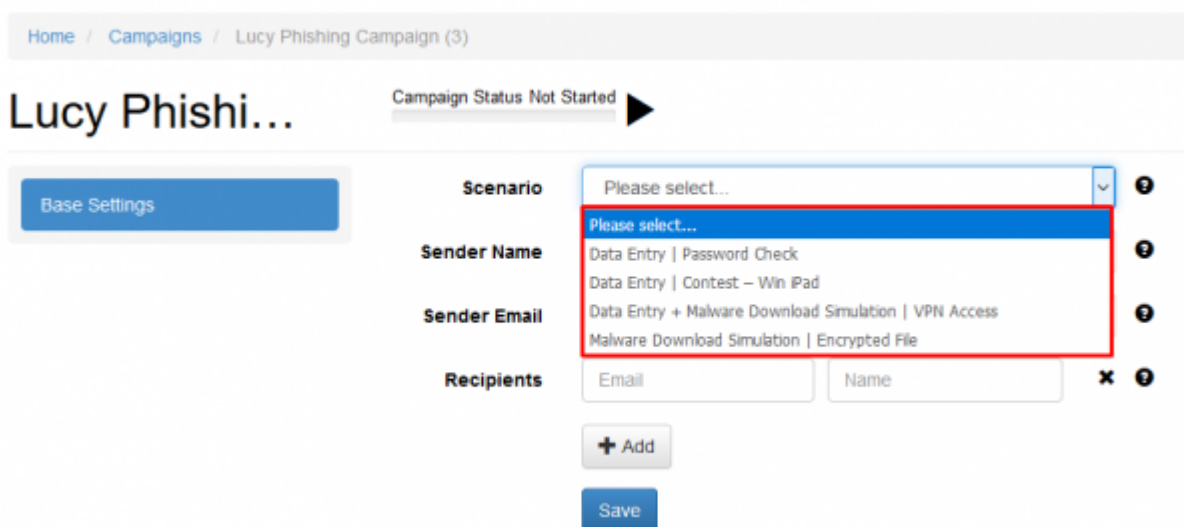
# Configuration of your campaign

When you start a new campaign you may either use:

- the Expert Setup: allows you to manually define each setting
- the Setup Wizard: guides you through the installation
- start with predefined campaign template: will do the whole configuration for you.
- risk assessment: create a real risk profile for your company by using recommended attack scenarios. Please don't forget to choose Industry type.
- Mail & Web Test: this scenario template is required for Mail & Web Filter test, which allows seeing what type of files can be accessed within the company network through mail or web.

## What is the predefined configuration?

If you want to create a campaign in less than 3 minutes you could also use the predefined campaigns. The predefined campaign has only a very small set of templates available which you can select. But after entering the recipient and sender details it will do the remaining configuration by itself.



From:  
<https://wiki.lucysecurity.com/> - LUCY

Permanent link:  
[https://wiki.lucysecurity.com/doku.php?id=predefined\\_campaigns\\_sample\\_campaign](https://wiki.lucysecurity.com/doku.php?id=predefined_campaigns_sample_campaign)

Last update: 2019/07/25 12:49

